



NOETIX[®]
BY MAGNITUDE

Take Control of Your Evolving ERP Footprint with Real-Time,
Combined Reporting from On-Premise and Cloud Applications

July 2019

Tim Colleran – Sr. Solution Architect

Agenda

- Introduction
- Challenges
- Magnitude's Strategy
- Demonstration
- Customer Story

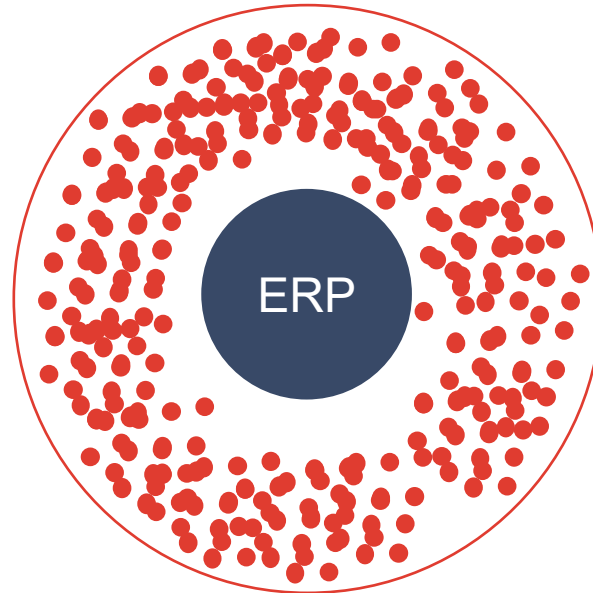
Today's BI Challenges – Reality of a Hybrid Environment

ERP Vision



Single instance delivering detangling process complexity and delivering vast organizational efficiencies

Reality



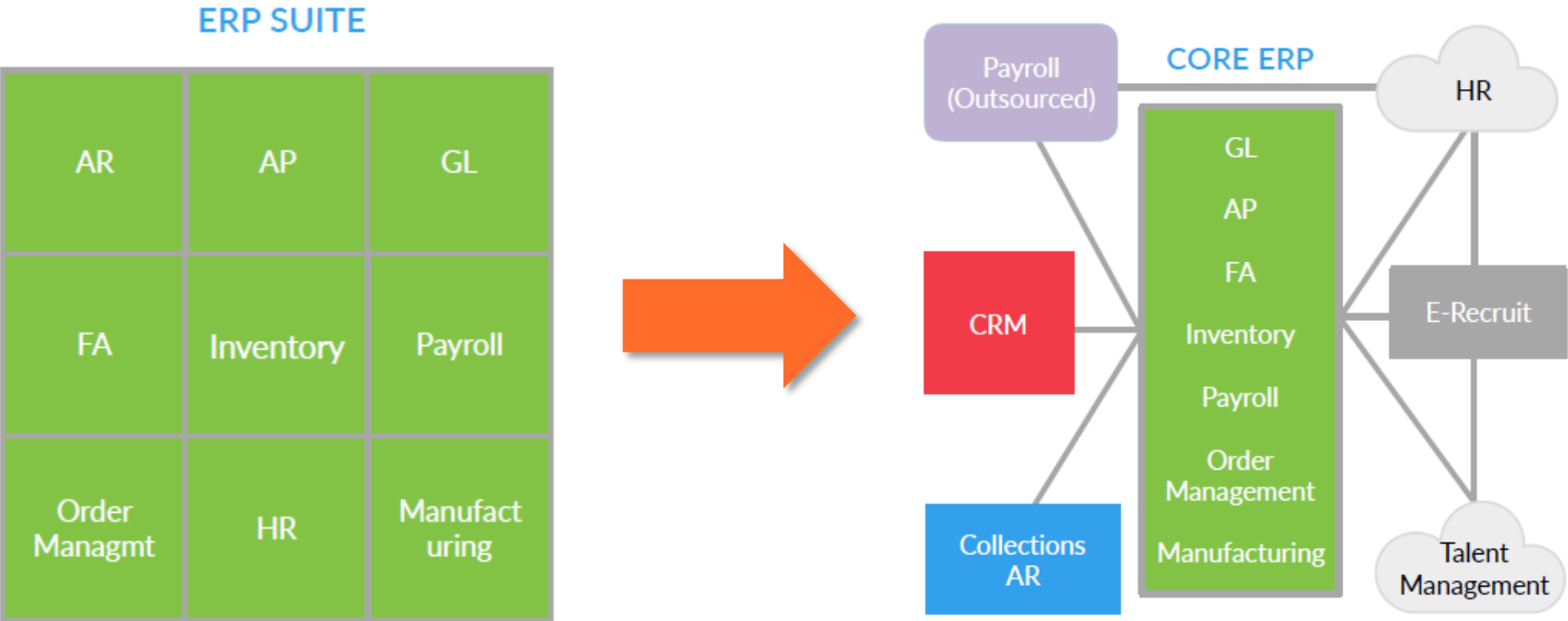
Core ERP fails to deliver on operational improvements because of fragmentation, creating whitespace around the ERP.
Custom builds and 3rd party vendors fill the gaps in the whitespace

Magnitude Strategy

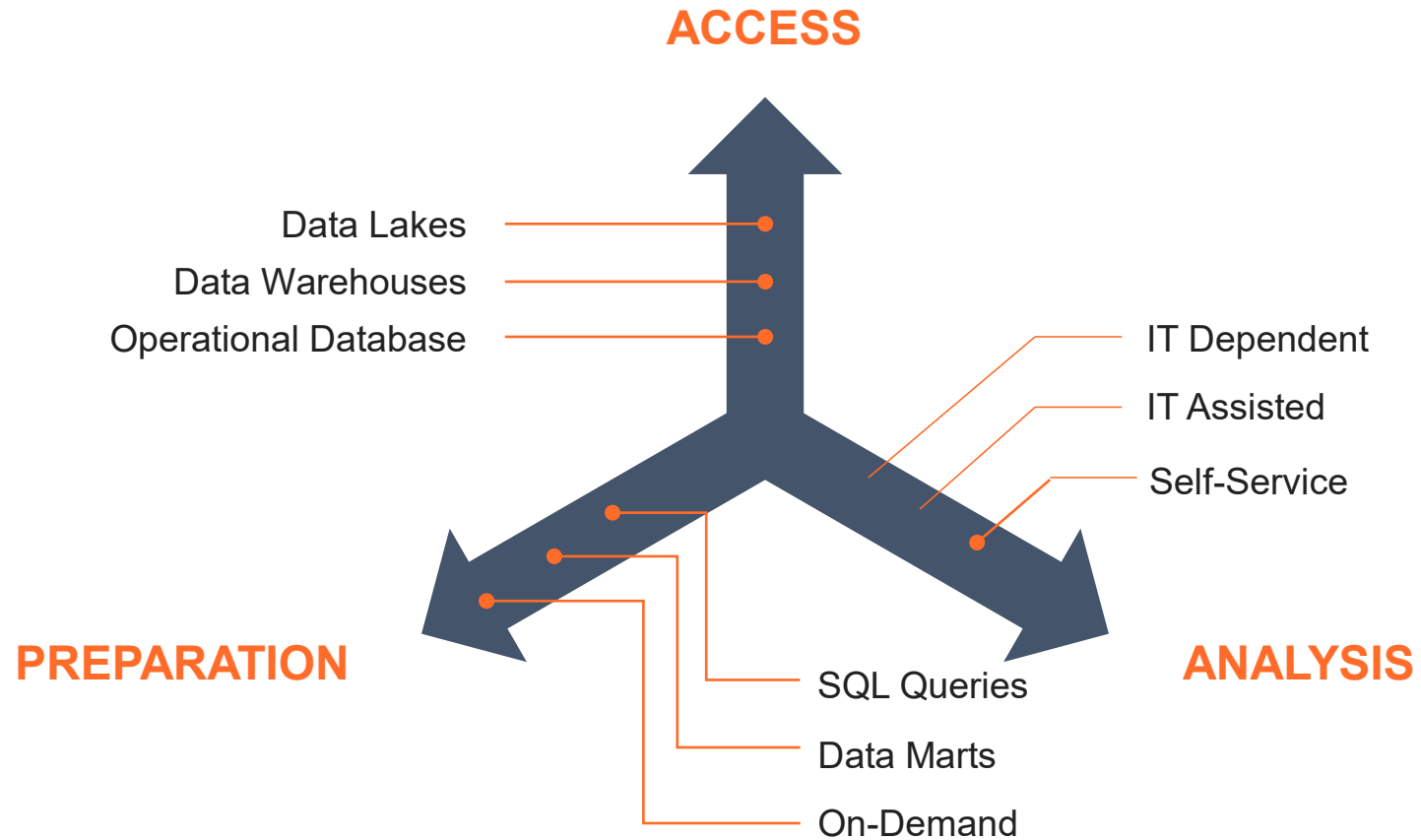


Magnitude strategy focused on consolidating the whitespace around core ERP through **internal product development and M&A**

Today's BI Challenges – ERP Evolution



Today's BI Challenges – Business Intelligence Evolution



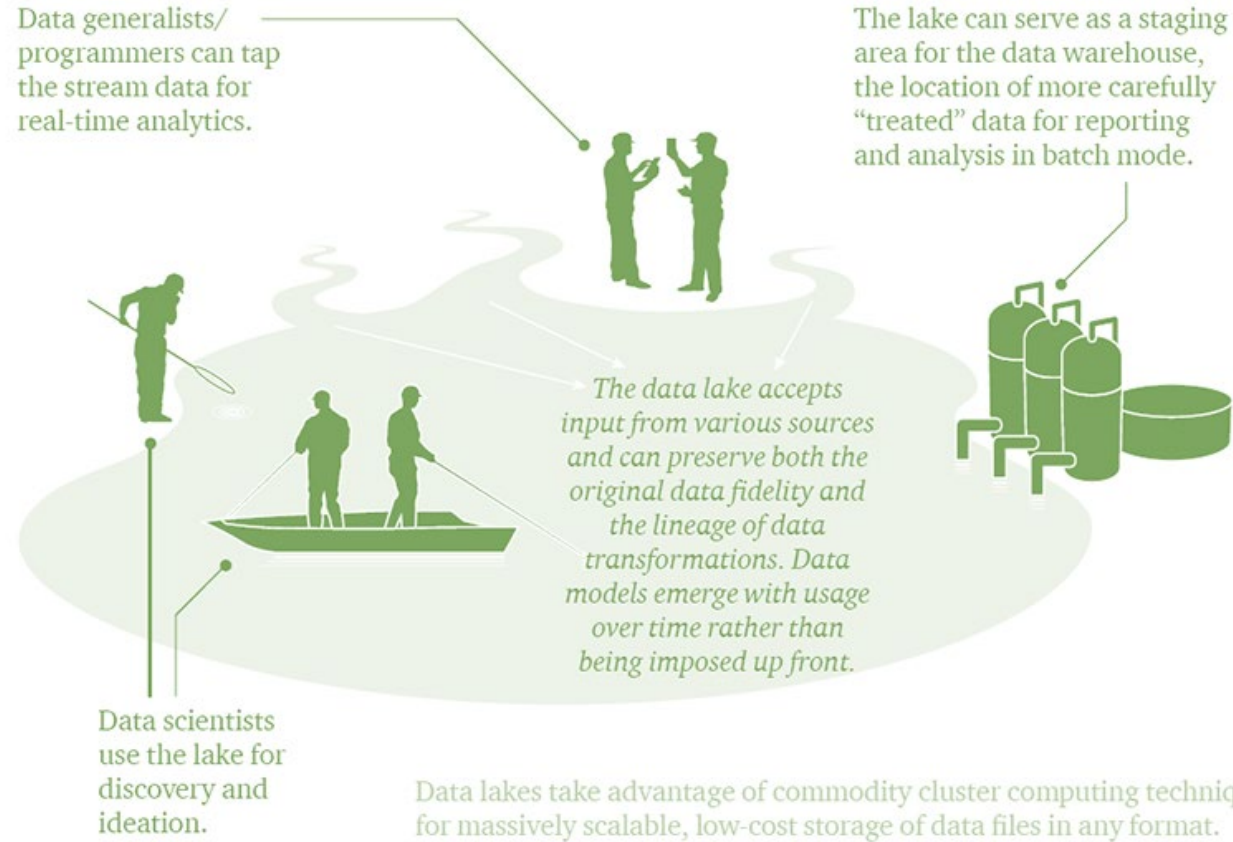
Today's BI Challenges – How do we access data?



A repository for large quantities and varieties of data, both structured and unstructured.

Data generalists/programmers can tap the stream data for real-time analytics.

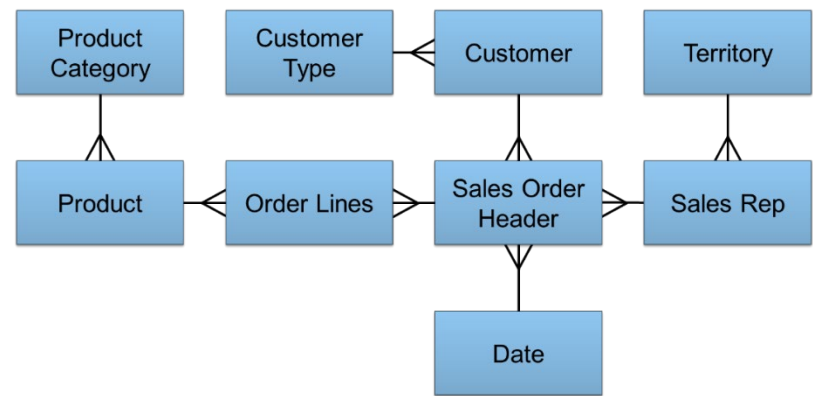
The lake can serve as a staging area for the data warehouse, the location of more carefully "treated" data for reporting and analysis in batch mode.



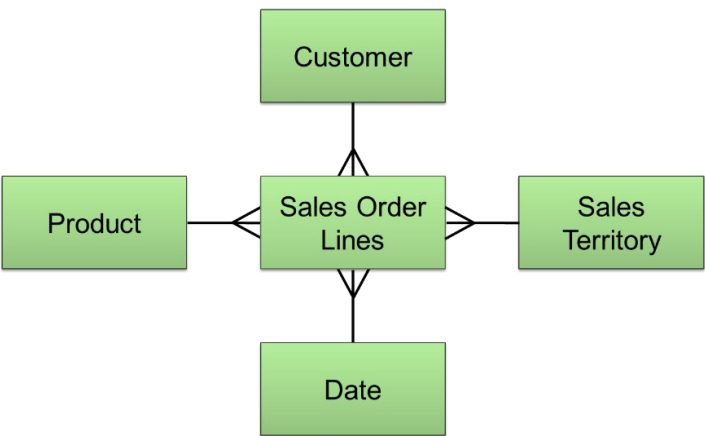
Data lakes take advantage of commodity cluster computing techniques for massively scalable, low-cost storage of data files in any format.

*Image source: pwc

Today's BI Challenges – How do we prepare data?



SQL QUERIES



DATA MARTS



ON-DEMAND

Today's BI Challenges – How easy is it to analyze data?



IT DEPENDENT



IT ASSISTED



SELF-SERVICE

How can Noetix help? – Noetix Cloud Analytics, a Central Reporting Platform

Multiple Applications



Cloud-Enabled Central Storage



Microsoft SQL Azure

amazon REDSHIFT

snowflake

- Cloud-Enabled, Centralized Reporting Platform
- 1000+ Pre-Built Real-Time Views and Reports and Analytical Data Marts
- Single User Interface for:
 - Content Search
 - Extending and Creating Views
 - Combined Application Reporting
 - BI Tool Generation

360 Degree Analysis & Reporting



Finance



Supply Chain



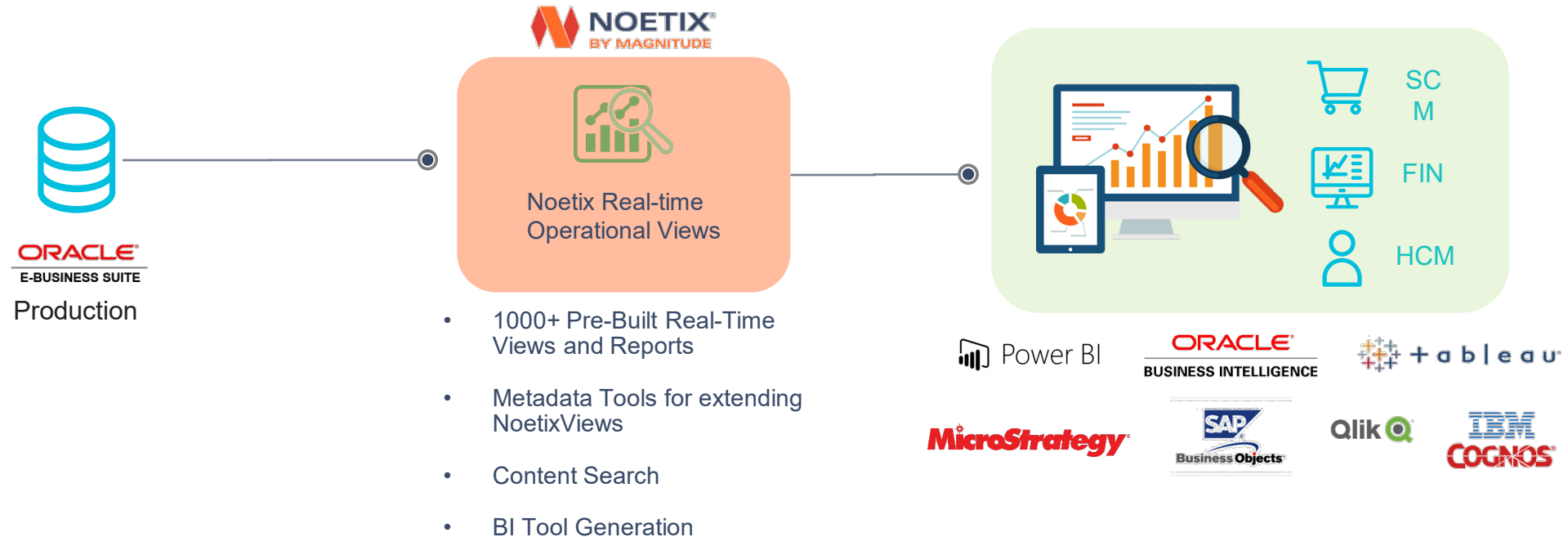
HCM



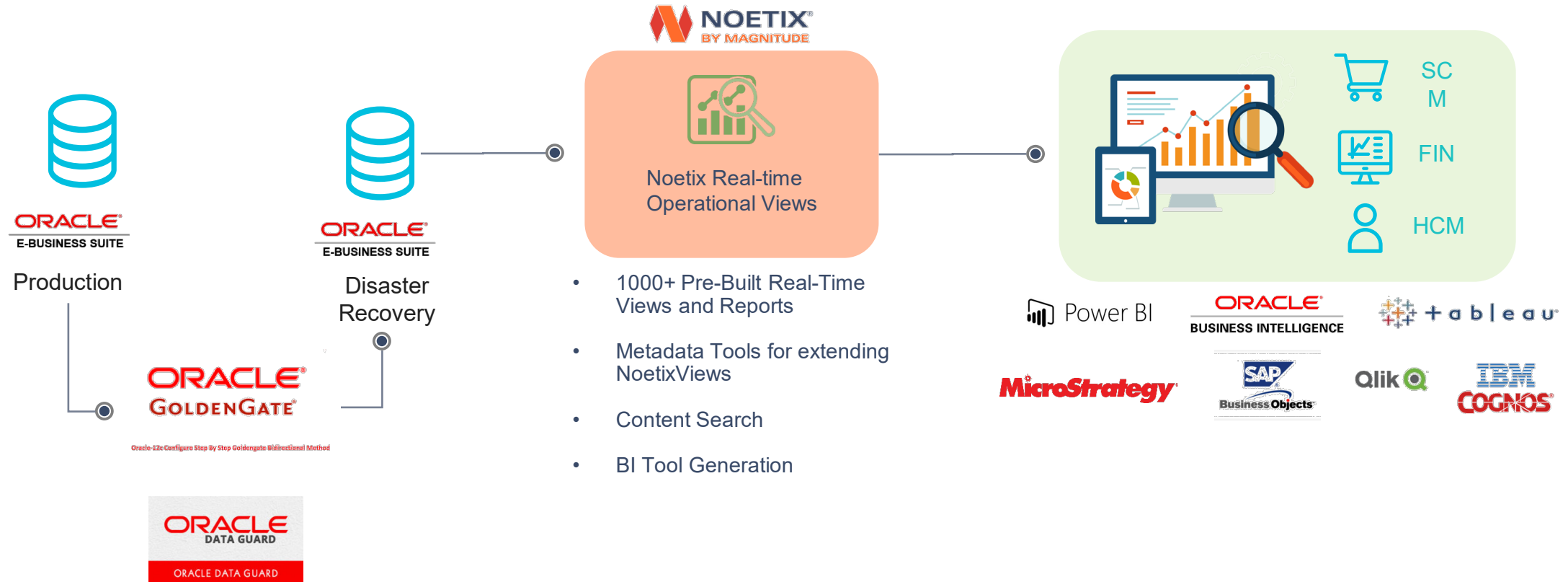
Power BI

tableau

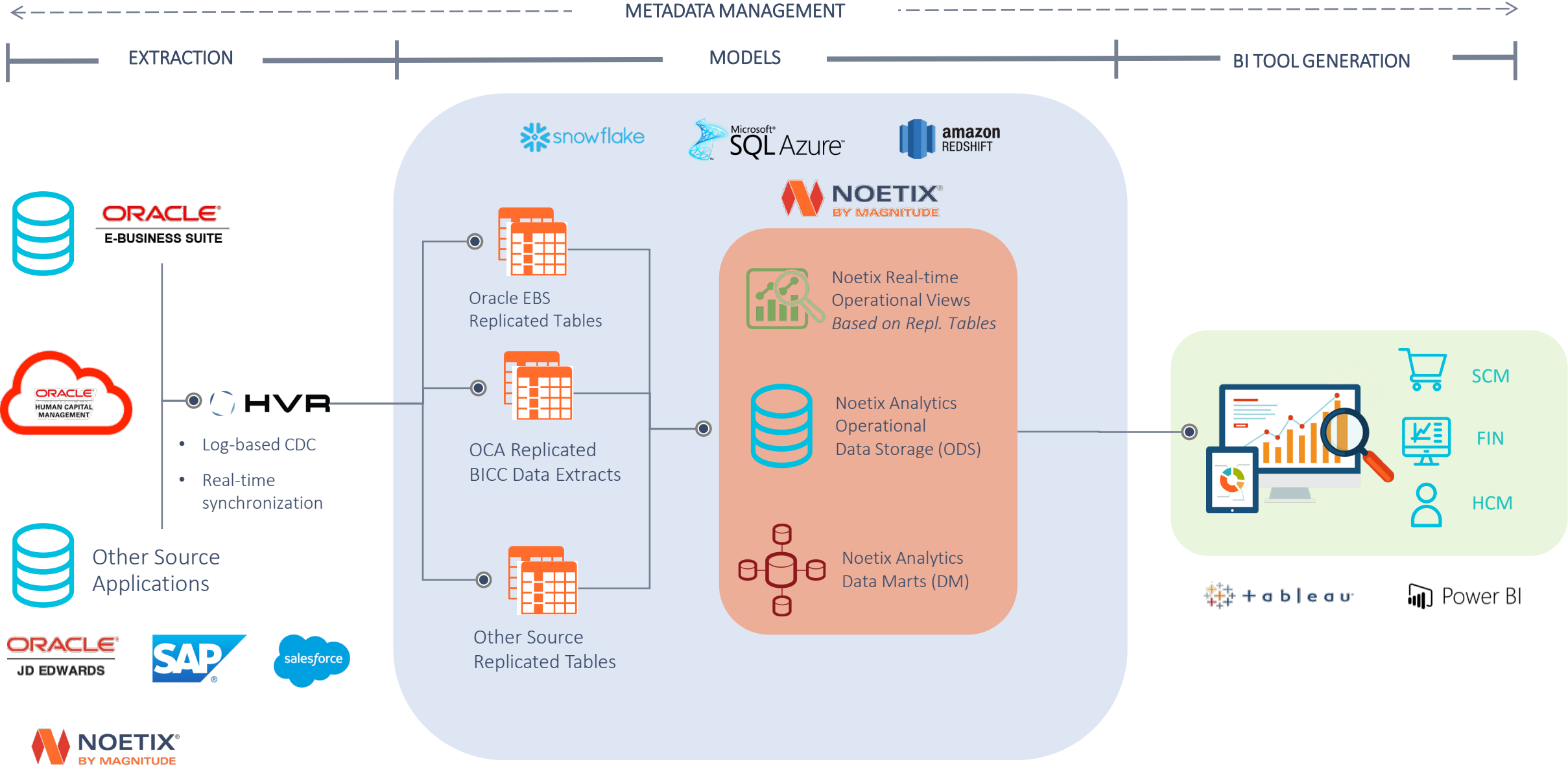
Evolution of Noetix – Stage 1



Evolution of Noetix – Stage 2



Evolution of Noetix – Noetix Cloud Analytics Architecture



Noetix Cloud Analytics Key Benefits

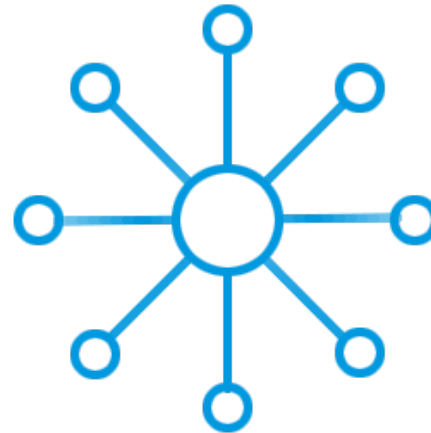


- Centralized cloud database to support analytical and operational reporting
- Integrate data from multiple-ERPs
- Connect to any source including cloud applications
- Reduce load on transactional systems

BROAD, RICH CONTENT

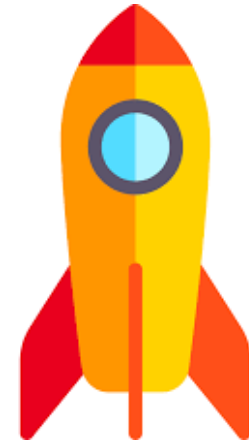
- Proven pre-built reporting and analytics
- Real-time views
- Packaged ETL and data warehouse
- Customize and extend
- Documented and cataloged

CENTRALIZED



FUTURE-READY

- Connect using the latest BI Platforms
- Support cloud adoption including OCA
- Quickly integrate systems from acquisitions or mergers
- Repatriate your organization's data
- Upgrade protection



Noetix Cloud Analytics – Use Cases - Administrator



- Consolidate data from multiple applications for reporting
- Leverage the Cloud for better scalability, cost structure, and performance
- Support company growth and integrate data from acquisitions and mergers faster
- Improve operational reporting performance while still allowing real-time access
- Better support user groups wanting self-service by enabling the latest reporting and visualization BI tools

Noetix Cloud Analytics – Use Cases – Analyst / SME



- Report and drill through data from multiple sources, either on-premise or SaaS
- Quickly create reports and analyze data from a source ERP without having extensive knowledge of the underlying data model
- Ability to integrate data from acquisitions and mergers into existing reporting
- Curate and share datasets to support critical business reporting
- Easily extend existing reporting to support changing requirements and answer today's business questions

Noetix Cloud Analytics – Use Cases – Business User



- Fast, accurate, real-time, consolidated, and integrated reporting and analysis
- Easily find reports, datasets that relate to my job function
- Ability to drill to details to verify data and answer business questions to variances or anomalies
- Easy to use interface
- Ability to manipulate real-time, refreshable datasets in Excel

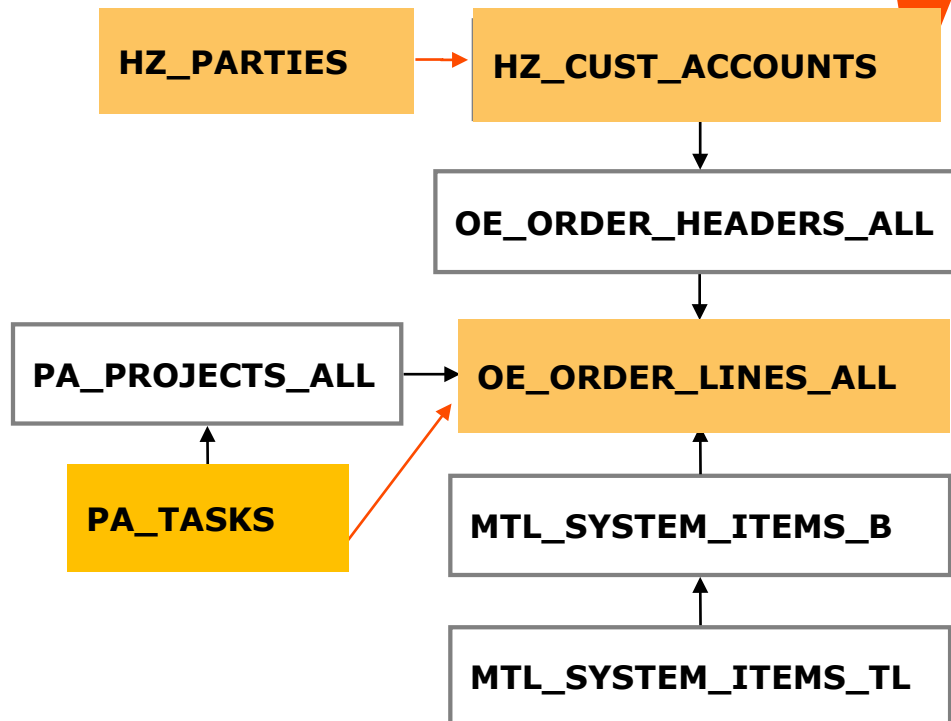
Simplifying the Oracle EBS Data Model



Oracle database tables

[Oracle EBS upgrade]

Flexfield column
in the table



View of the database

[remaps view]

Order Lines
ATO Flag
Booked Date
Customer
Customer No.
Cust. Status
Item
Item Desc.
Line Status
Open Quant.
Order No.
Order Quant.
Project
Quantity
Organization

Your Choice BI Tool

[doesn't break]

Orders
Customer
Customer No.
Cust. Status
Booked Date
Order Quant.
Open Quant.
Selling Org.

Flexfield column
in the view

Noetix Content - Real-Time NoetixViews for Oracle EBS

 FINANCIALS	 HUMAN RESOURCES	 SALES	 SUPPLY CHAIN	 DISCRETE MFG.	 PROCESS MFG.	 PROJECTS	 SERVICE
General Ledger	Human Resources	Quoting*	Inventory			Costing	Service Contracts
Payables	Advanced Benefits	Incentive Compensation*	Advanced Supply Chain Planning			Billing	TeleService
Receivables & Advanced Collections*	Payroll	Field Sales*	Quality		Process Quality	Project Contracts*	Field Service
Subledger Accounting	Learning Management*		Purchasing	Bills of Material	Planning	Project Management	Install Base
Employee Expenses*	Time & Labor		iProcurement*	Master Scheduling MRP	Development	Grants Accounting	Depot Repair
Assets	Labor Distribution*		Order Management	Work in Process	Execution	Project Manufacturing*	
Enterprise Asset Management	Performance Management*		Contract Lifecycle Management	Cost Management	Financials		
Cash Management			Supplier Lifecycle Management*				
Property Management*			Procurement Contracts*				

* Limited Availability

Noetix Content - Other Applications

Oracle JD Edwards E1

- Financials
- Human Capital Management
- Equipment Management
- Expense Management
- Inventory
- Load and Delivery
- Manufacturing
- Purchasing
- Sales, Service
- Warehouse, Transportation

Oracle PeopleSoft

- Financials
- Human Resources
- Payroll
- Projects Accounting
- Purchasing

Oracle Cloud Apps

- Expense Cloud
- HCM Cloud*
- Financials Cloud*
- SCM Cloud*

* *Planned for delivery in 2019*

SaaS Applications

- Salesforce
 - Assets
 - Campaigns
 - Cases
 - Events
 - Leads
 - Opportunities
 - Tasks
 - Price Book
- Zuora
 - RevPro

Noetix Cloud Analytics – HCM Content Coverage – Full Roadmap

Offering: Cover Core HR, Benefits, Talent Management, Compensation, Recruitment

Benefits

- Action Items
- Enrollment Opportunities
- Enrollments
- Potential Life Events
- Setup

Workforce Management

- Absence
- Accrual
- Employment Contract
- Grade Rate
- Person
- Position
- Vacancy
- Work Relationship
- Worker Assignment Event
- Worker Assignment
- Workforce Trend

Workforce Performance

- Performance Document Eligibility
- Performance Document Status
- Performance Rating Distribution
- Performance Rating
- Performance Task Status

Workforce Succession Management

- Incumbent Plans
- Job Plans
- Plan Candidates
- Position Plans
- Talent Pools

Workforce Talent Review

- Talent Review Meeting
- Talent Review Tasks

Compensation

- Salary Details
- Salary History Details
- Stock Details
- Workforce Compensation Budgets
- Workforce Compensation

Human Capital Management

- Approval Notification Archive
- Transaction Administration

Recruiting

- Recruiting

Workforce Goals

- Target Outcomes

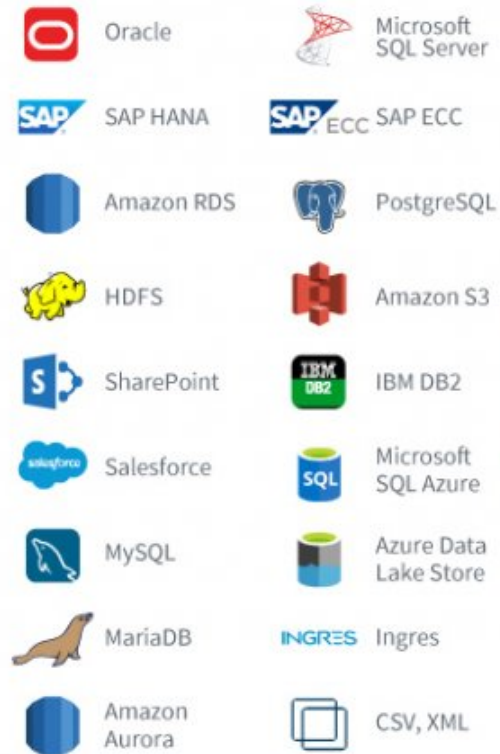
Workforce Management

- Checklist
- Documents of Record
- Historical Processed Time Cards
- Historical Reported Time Cards
- Planned Schedules
- Processed Time Cards
- Published Schedules
- Reported Time Cards
- Scheduler Profiles
- Setup Objects and Profiles
- Time Collection Devices

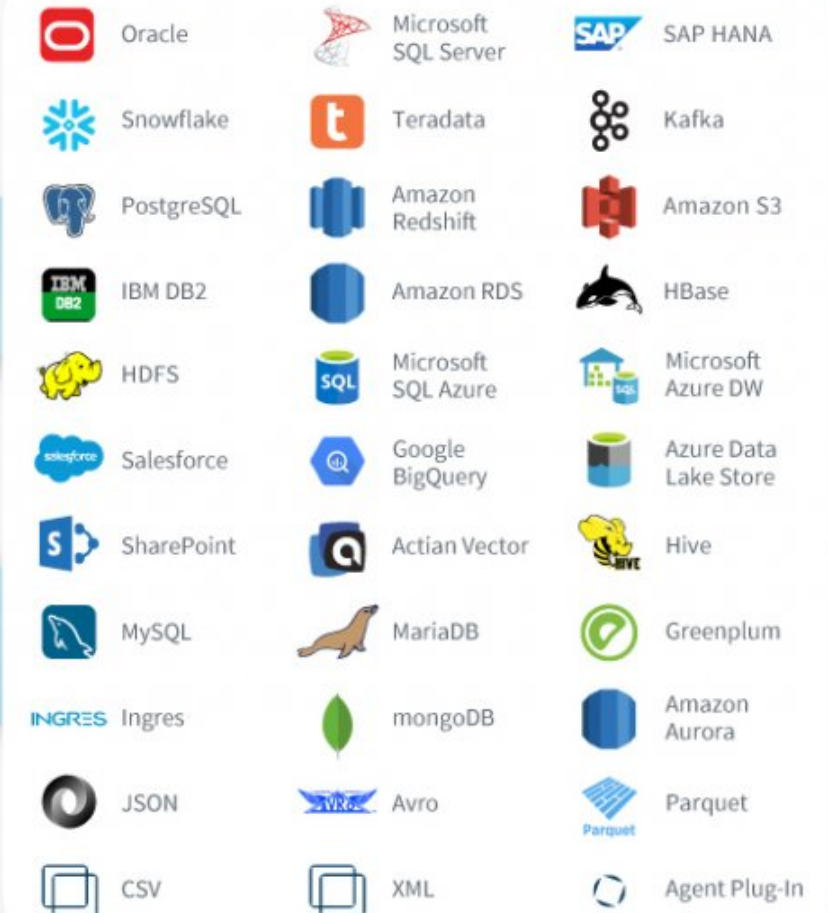
HVR Connectors

- Primarily for On-Prem data sources
- Real Time Log Based Changed Data Capture

Sources



Targets





Demonstration

Use Case: Performing real-time account analysis with subledger detail in Power BI

Role: Business User

System: Noetix Cloud Analytics Power BI Generator



Key Takeaways

- Access to real-time Oracle EBS data from a central, integrated platform with access to multiple EBS environments
- Proven pre-built business content for Oracle EBS to simplify data preparation and report development
- Simple generation of reports into Power BI

Why Noetix Generator?

- **Streamlines Data Access**
 - No need to have Oracle Client installed
 - Leverage existing NoetixViews
 - Multi-View datasets using pre-defined joins and view relationships
 - Add parameters for faster data access
- **Simplifies Security**
 - Inherits existing Oracle EBS multi-org and Noetix role-based row-level security
 - Users do not need to login to Oracle, authenticated through Windows login
 - Security is enforced after the report is generated
- **Accelerates BI Tool Implementation**
 - Quickly access EBS data without having to navigate complex base tables and join relationships
 - Get started today using the NoetixViews your users are familiar with today
 - Balances Power User – User relationships while allowing for managed self-service

Why Microsoft Power BI?

- The most intuitive, easy-to-use BI platform on the market today
 - Familiar Microsoft UI
 - Builds upon the Excel knowledge foundation of today's business users
 - Has the focus of Microsoft R&D, feature-rich monthly updates
- Seamless integration with Office 365 and Excel
 - Excel add-in allows users to quickly have their real-time EBS data in an Excel Pivot Table
 - Share and Collaborate on Excel files through the report server and Excel Online
- Easily schedule, share, and collaborate on dashboards, reports and workbooks saved to a robust report server
 - Desktop, Online, Mobile Devices
- Self-service analysis with support for many different data sources
 - SQL Server, Azure, Salesforce, Excel workbooks, MS Access, Oracle DB, and many more
 - Easily create relationships and cross-application reporting

GL to SL Reconciliation - Power BI

https://app.powerbi.com/groups/me/reports/226a5b29-a585-4fab-92f6-77e99a2ac018/ReportSection

Power BIMy Workspace > GL to SL Reconciliation

FileViewEdit reportExploreRefreshPin Live PageReset to defaultCommentsBookmarksUsage metricsView relatedUnfavoriteSubscribeShare

Legal Entity

01

Account Type

All

Account

All

JE Source

All

JE Category

All

All values displayed in functional currency (USD)

Instructions: Click on any account in the Trial Balance to view JE lines. Right-Click on any account to drill through to transaction detail (GL JE SLA Detail).

Trial Balance by Account

Account	Account Description	Beginning Balance	Net Activity	Ending Balance
1952	Lease Funding	3,331,269.37	0.00	3,331,269.37
1953	Assets on Lease - Vehicles	2,125,081.00	0.00	2,125,081.00
1955	Assets on Lease - Office Equipment	1,504,650.00	0.00	1,504,650.00
1956	Accumulated Depn - Vehicles	-1,964,914.73	0.00	-1,964,914.73
1957	Accumulated Depn - Computers	-130,000.00	0.00	-130,000.00
1958	Accumulated Depn - Office Equipment	-3,477,800.91	0.00	-3,477,800.91
1959	Residual Value	1,302,456.00	0.00	1,302,456.00
1960	Loan Principal	552,322.43	0.00	552,322.43
1961	Insurance Receivable	-18,900.00	0.00	-18,900.00
2110	Payable to Bank - Current	-85,993,103.57	0.00	-85,993,103.57
2210	Accounts Payable	-686,524,106.27	-28,597,490.49	-715,121,596.76
2215	Accrued Receipts	-775,460.97	0.00	-775,460.97
2220	Accounts Payable Clearing	-28,765,162.33	-17.21	-28,765,179.54
2225	Accrued Expenses	21,349.84	0.00	21,349.84
2240	Cost of Removal Clearing	-25.00	0.00	-25.00
2300	Income Taxes Payable	0.00	0.00	0.00
2340	State Income Tax Payable	0.00	0.00	0.00
2350	Deferred Income Taxes - Current	0.00	0.00	0.00
2370	Intercompany Payables	-545,372.98	0.00	-545,372.98
2373	I/C Payables - Distribution	-18,030.00	0.00	-18,030.00
2374	I/C Payables - Services	-13,200.00	0.00	-13,200.00
2381	I/C Payables - Thailand	-49,000.00	0.00	-49,000.00
2410	Accrued Payroll	-1,436,520.83	-19,063.50	-1,455,584.33
2420	Payroll Clearing	-272,636,231.99	-3,125,131.47	-275,761,363.46
2510	Federal Pay Income Tax Withheld	-6,012.68	0.00	-6,012.68
2511	State Pay Income Tax Withheld	0.00	0.00	0.00
Total		0.00	0.00	0.00

GL Journal Lines Detail

Account	JE Source	JE Category	JE Status	JE Name	DR (Acctd)	CR (Acctd)	Net (Acctd)
2210	Payables	Cash Disbursements	Posted	Jun-09 Payments USD	2,385,851.06	0.00	2,385,851.06
2210	Payables	Accounts Payable Invoices	Posted	Jun-09 Purchase Invoices USD	256,821.99	29,495,553.56	-29,238,731.57
2210	Cost Management	Receiving	Posted	Jun-09 Receiving USD	0.00	256,821.98	-256,821.98
2210	Manual	Adjusting Journal Entry	Posted	PK Journal	0.00	110.00	-110.00
2210	Spreadsheet	Adjusting Journal Entry	Posted	Benefits/Commissions/Misc 2009 June Adjustment USD	0.00	1,487,678.00	-1,487,678.00
					2,642,673.05	31,240,163.54	-28,597,490.49

GL Trial Balance

GL JE SLA Detail

AP Invoice Distributions

AP Payment Distributions

AR Transaction Distributions

FA Transaction Distributions

INV Transaction Distributions

PA Cost Distributions

PA Revenue Distributions

PO Receiving Distributions



SL Application

All

All

SLA Lines Summary by Source / Category

JE Source	JE Category	DR	CR	Net
Cost Management	Receiving	0.00	256,821.98	-256,821.98
Payables	Payments	2,385,851.06	0.00	2,385,851.06
Payables	Purchase Invoices	256,821.99	29,495,553.56	-29,238,731.57
Total		2,642,673.05	29,752,375.54	-27,109,702.49

PivotTable Name: PivotTable2

Active Field: SUPPLIER_NAME

Options

Expand Field

Collapse Field

Group Selection

Ungroup

Group Field

Insert Slicer

Insert Timeline

Filter Connections

Refresh

Change Data Source

Clear

Select

Move PivotTable

Fields, Items, & Sets

OLAP Tools

Relationships

PivotChart

Recommended PivotTables


Field List

+/- Buttons

Field Headers

E16

Advanced Network Devices

	B	C	D	E	F	G	H	I	J	K	L	M	N
1													
2													
3													
4													
5													
6	GL / SLA Purchase Invoice Transactions												
7													
8	ACCTSLA\$QV\$BALANCING	01											
9	ACCTSLA\$QV\$NATURAL_ACCOUNT	2210											
10	SUBLEDGER_APPLICATION_NAME	Payables											
11	JOURNAL_CATEGORY_NAME	Purchase Invoices											
12	GL_PERIOD_NAME	Jun-09											
13													
14	Row Labels	Total SLA Amount CR		Row Labels	Total Distr Amount								
15	Advanced Network Devices	327,883.62		Advanced Network Devices	327,883.62		327,883.62		327,883.62		-		
16	Allied Manufacturing	25,901,518.38		Allied Manufacturing	25,901,518.38		25,901,518.38		25,901,518.38		-		
17	American Telephone and Telegraph	82,111.72		American Telephone and Telegraph	82,111.72		82,111.72		82,111.72		-		
18	Apt, Peter M.	266,476.00		Apt, Peter M.	266,476.00		266,476.00		266,476.00		(0.00)		
19	Bailey, Sara	3,100.56		Bailey, Sara	3,100.56		3,100.56		3,100.56		-		
20	Beckman, Lisa	3,694.97		Beckman, Lisa	3,694.97		3,694.97		3,694.97		-		
21	Beckmann, Lisa	2,882.00		Beckmann, Lisa	2,882.00		2,882.00		2,882.00		-		
22	Bogini, Samuel	4,434.00		Bogini, Samuel	4,434.00		4,434.00		4,434.00		-		
23	Brown, Casey	3,268.42		Brown, Casey	3,268.42		3,268.42		3,268.42		-		
24	Building Management Inc.	3,381.69		Building Management Inc.	3,381.69		3,381.69		3,381.69		-		
25	CDS, Inc	589,936.24		CDS, Inc	589,936.24		589,936.24		589,936.24		0.00		
26	Consolidated Supplies	1,806.61		Consolidated Supplies	1,806.61		1,806.61		1,806.61		-		
27	Eastern Industrial Products	34,944.60		Eastern Industrial Products	34,944.60		34,944.60		34,944.60		-		
28	Erickson, Barry	496,496.00		Erickson, Barry	496,496.00		496,496.00		496,496.00		-		
29	General Electric	4,046.06		General Electric	4,046.06		4,046.06		4,046.06		-		
30	Goldman, Pamela	62,809.56		Goldman, Pamela	62,809.56		62,809.56		62,809.56		-		
31	Katzberg, Susan	3,199.00		Katzberg, Susan	3,199.00		3,199.00		3,199.00		-		
32	Lang, Inga R	3,568.54		Lang, Inga R	3,568.54		3,568.54		3,568.54		-		
33	Lewis, David	3,762.99		Lewis, David	3,762.99		3,762.99		3,762.99		-		
34	Marsh, Chris	9,967.00		Marsh, Chris	9,967.00		9,967.00		9,967.00		-		
35	McGwire, Patrick	3,466.86		McGwire, Patrick	3,466.86		3,466.86		3,466.86		-		
36	Office Supplies, Inc.	4,255.91		Office Supplies, Inc.	4,255.91		4,255.91		4,255.91		-		
37	Sole, Samuel	113,766.60		Sole, Samuel	113,766.60		113,766.60		113,766.60		0.00		
38	Staples	1,670.42		Staples	1,670.42		1,670.42		1,670.42		-		
39	Star Gate Ltd	487,916.05		Star Gate Ltd	487,916.05		487,916.05		487,916.05		-		
40		27,645.80			27,645.80		27,645.80		27,645.80		-		

PivotTable Fields

Show fields: (All)

Search

APG0_SLA_INVOICE_DIST

GLG0_BALANCES

GLG0_JOURNAL_ENTRY_LINES

XLAG0_SLA_HUB_JOURNAL_LINES

APG0_SLA_INVOICE_DIST

GLG0_BALANCES

GLG0_JOURNAL_ENTRY_LINES

XLAG0_SLA_HUB_JOURNAL_LINES

Drag fields between areas below:

Filters

ACCTEXP\$QV\$BALA...

GL_PERIOD_NAME

Columns

Rows

SUPPLIER_NAME

INVOICE_NUMBER

Values

Total Distr Amount

☐ Defer Layout Update

Update

GL to SL Reconciliation - Power BI Desktop

File

Home

Modeling

Help

Cut

Copy

Paste

Format Painter

Get Data

Recent Sources

Enter Data

Edit Queries

Refresh

New Page

New Visual

Ask A Question

Buttons

Image

Text box

Shapes

From Marketplace

From File

Switch Theme

Manage Relationships

Publish

Clipboard

External data

Insert

Custom visuals

Themes

Relationships

Share

GL Balances

Account_Type

Acct\$CD\$Accounting_KFF

Acct\$Code_Combination_Id

Acct\$CV\$Accounting_KFF

Acct\$QD\$Balancing

Acct\$QD\$Cost_Center

Acct\$QD\$Natural_Account

Acct\$QV\$Balancing

Acct\$QV\$Cost_Center

Acct\$QV\$Natural_Account

Acct\$Segment_Name_List

Acct\$Structure_Name

Balance

Balance_Accounted

Begin_Balance

Begin_Balance_Accounted

Calendar_Name

Chart_Of_Accounts_Name

Currency_Code

Functional_Currency_Code

Ledger_Name

Period_Name

Period_Net

Period_Net_Accounted

Period_Number

Period_Offset

Period_Type

Period_Vers

GL Journal Entry Lines

Accrual_Reversed_Flag

Acct\$Code_Combination_Id

Acct\$CV\$Accounting_KFF

Acct\$QV\$Balancing

Acct\$QV\$Cost_Center

GL Journal SLA Lines

Account_Type

Account_Type (XLAG0_SLA_Hub_Journal_Lines)

Accounting_Class

Accounting_Def_Owner_Type

Accounting_Def_Version_Num

Accounting_Definition_Name

Accounting_Entry_Status

Accounting_Entry_Type

Accounting_Event_Class_Name

Accounting_Event_Create_Date

Accounting_Event_Date

Accounting_Event_Entity_Code

Accounting_Event_Header_ID

Accounting_Event_Line_Number

Accounting_Event_Number

Accounting_Event_Status

Accounting_Event_Type_Name

PO Receiving Distributions

Accounting_Event_Header_ID

Accounting_Event_Line_Number

Accounting_Line_Type

Accrue_On_Receipt_Flag

Acct_Event_Application_ID

AcctRcv\$CD\$Accounting_KFF

AcctRcv\$Code_Combination_Id

AcctRcv\$CV\$Accounting_KFF

AcctRcv\$QD\$Balancing

AcctRcv\$QD\$Cost_Center

AcctRcv\$QD\$Natural_Account

AcctRcv\$QV\$Balancing

AcctRcv\$QV\$Cost_Center

AcctRcv\$QV\$Natural_Account

AP Invoice Distributions

Accounting_Event_Header_ID

Accounting_Event_Line_Number

Acct_Event_Application_ID

AcctExp\$CD\$Accounting_KFF

AcctExp\$Code_Combination_Id

AcctExp\$CV\$Accounting_KFF

AcctExp\$QD\$Balancing

AcctExp\$QD\$Cost_Center

AcctExp\$QD\$Natural_Account

AcctExp\$QV\$Balancing

AcctExp\$QV\$Cost_Center

AcctExp\$QV\$Natural_Account

AcctExp\$Segment_Name_List

AcctExp\$Structure_Name

Chart_Of_Accounts_Name

Currency_Code_Base

Distr_Final_Match_Flag

INV Transaction Distributions

Accounting_Event_Header_ID

Accounting_Event_Line_Number

Accounting_Line_Type

Acct_Event_Application_ID

AcctMtl\$CD\$Accounting_KFF

AcctMtl\$Code_Combination_Id

AcctMtl\$CV\$Accounting_KFF

AcctMtl\$QD\$Balancing

AcctMtl\$QD\$Cost_Center

AcctMtl\$QD\$Natural_Account

AcctMtl\$QV\$Balancing

AcctMtl\$QV\$Cost_Center

AcctMtl\$QV\$Natural_Account

AcctMtl\$Segment_Name_List

FA Transaction Distributions

Accounting_Event_Header_ID

Accounting_Event_Line_Number

Acct_Event_Application_ID

AcctExp\$CD\$Accounting_KFF

AcctExp\$Code_Combination_Id

AcctExp\$CV\$Accounting_KFF

AcctExp\$QD\$Balancing

AcctExp\$QD\$Cost_Center

AcctExp\$QD\$Natural_Account

AcctExp\$QV\$Balancing

AcctExp\$QV\$Cost_Center

AcctExp\$QV\$Natural_Account

AcctExp\$Segment_Name_List

AcctExp\$Structure_Name

Asset_Description

Asset_Number

Asset_Tag_Number

Properties

Fields

Search

AP Invoice Distributions

AP Payment Distributions

AR Transaction Distributions

FA Transaction Distributions

GL All Journal Lines

GL Balances

GL Journal Entry Lines

GL Journal SLA Lines

INV Transaction Distributions

P_Enter_Entered_Period_Name

P_Enter_GL_Period_Name

P_Enter_Ledger_Name

P_Enter_Period_Name

PA Cost Distributions

PA Revenue Distributions

PO Receiving Distributions

All tables

Noetix Generator for Power BI

File Help EBS NoetixViews (Financials) ▾

[-] NoetixViews for Oracle Federal Financials

- [-] Subledger Accounting Views
 - ☐ XLAG0_AP_Invoice_Dist
 - ☐ XLAG0_AP_Payment_Dist
 - ☐ XLAG0_AR_Adjustment_Dist
 - ☐ XLAG0_AR_Bills_Rcv_Dist
 - ☐ XLAG0_AR_Misc_Receipt_Dist
 - ☐ XLAG0_AR_Std_Receipt_Dist
 - ☐ XLAG0_AR_Transaction_Dist
 - ☐ XLAG0_Accrual_Write_Off_Dist
 - ☐ XLAG0_FA_Transaction_Dist
 - ☐ XLAG0_FV_Budget_Auth_Trans
 - ☐ XLAG0_FV_Budget_RPR_Trans
 - ☐ XLAG0_FV_Fund_Distributions
 - ☐ XLAG0_FV_Treas_Confirmation
 - ☐ XLAG0_GL_All_Balances
 - ☐ XLAG0_GL_Journal_Lines
 - ☐ XLAG0_GMF_Cst_Subledger_Dist
 - ☐ XLAG0_INV_Transaction_Dist
 - ☐ XLAG0_PA_Budget_Dist
 - ☐ XLAG0_PA_Cost_Dist
 - ☐ XLAG0_PA_Revenue_Dist
 - ☐ XLAG0_PO_Receiving_Dist
 - ☐ XLAG0_PO_Requisition_Dist
 - ☒ XLAG0_SLA_Hub_Journal_Lines
 - ☐ XLAG0_WIP_Resource_Dist
- [-] All Charts of Accounts KFF Views
- [-] FED Acting Flex Chart of Accounts KFF Views
- [-] Operations Accounting Flex Chart of Accounts KFF Views
- [-] Services Accounting Flex Chart of Accounts KFF Views

Tables:

XLAG0_SLA_Hub_Journal_Lines
Subledger Accounting Views

Filters:

XLAG0_SLA_Hub_Journal_Lines:
to_date(to_char(XLAG0_SLA_HUB_JOURNAL_LINES.GL_DATE,'

XLAG0_PA_Budget_Dist (Subledger Accounting Views):

This cross-functional view links accounting entries in Oracle Subledger Accounting to the corresponding budget distribution lines in Oracle Projects.

This view returns information about subledger accounting distributions for all accounting events generated for cost and revenue budget distributions. A record is returned for each combination of an accounting event header identifier, an accounting event line number, and a subledger accounting distribution detail line number.

This view provides information about subledger accounting distribution line-related information, such as the accounting event application identifier, accounting event header identifier, accounting event line number, journal line type code, and amounts in the primary and transaction currencies. This view provides budget-line information, such as the account; quantity; start and end dates; expenditure category and type; general ledger and project period names; revenue category; job and organization names; budgeted revenue amount, burdened cost, and raw cost in the project, project functional, primary, and transaction currencies; and the exchange rates, dates, and types. Budget information, such as the status, entry level and method code, amount type, time phase, version number, name, base line date, and description; project information, such as the name, number, and

☒ Include Parameters [Edit](#)

☐ Generate Answers

[Edit Filters](#)

[Save](#)

Parameter configuration

☒ XLAG0_SLA_Hub_Journal_Lines

- ☐ Accounting_Definition_Name
- ☐ AcctSLA\$CD\$Accounting_KFF
- ☐ AcctSLA\$CV\$Accounting_KFF
- ☐ AcctSLA\$QD\$Balancing
- ☐ AcctSLA\$QD\$Cost_Center
- ☐ AcctSLA\$QD\$Natural_Account
- ☐ AcctSLA\$QV\$Balancing
- ☐ AcctSLA\$QV\$Cost_Center
- ☐ AcctSLA\$QV\$Natural_Account
- ☐ AcctSLA\$Segment_Name_List
- ☐ AcctSLA\$Structure_Name
- ☐ Chart_Of_Accounts_Name
- ☒ GL_Period_Name
- ☐ Journal_Category_Name
- ☒ Ledger_Name
- ☐ Legal_Entity_Name
- ☐ Operating_Unit_Name
- ☐ Subledger_Application_Name
- ☐ User_JE_Category_Name

[OK](#) [Cancel](#)

Desktop

File Home Share View

← → ↑ This PC > Desktop

Name

- 2019q1
- Staff
- 2019q1
- Microsoft Teams
- tnsnames - Shortcut
- XLAG0_SLA_Hub_Journal_Lines

6 items 1 item selected 8.28 KB



File Home View Modeling Help

Paste Cut Copy Format Painter

Get Data Recent Sources Enter Data Edit Queries Refresh

External data

New Page New Visual Ask A Question Buttons Text box Image Shapes

Insert

From Marketplace From File Switch Theme Themes

Custom visuals

Manage Relationships Relationships

New Measure New Column New Quick Measure

Calculations

Publish Share

Visuals

Tables

Relationships

X

XLAG0_SLA_Hub_Journal_Lines

Enter GL Period Name

Jun-09

Enter Ledger Name

Enter or select a value

Progress UK
Progress UK Health Services
Vision Operations (USA)

Load
Cancel



Demonstration

Use Case: Reporting on key HR metrics from OCA-HCM in Power BI

Role: Business User

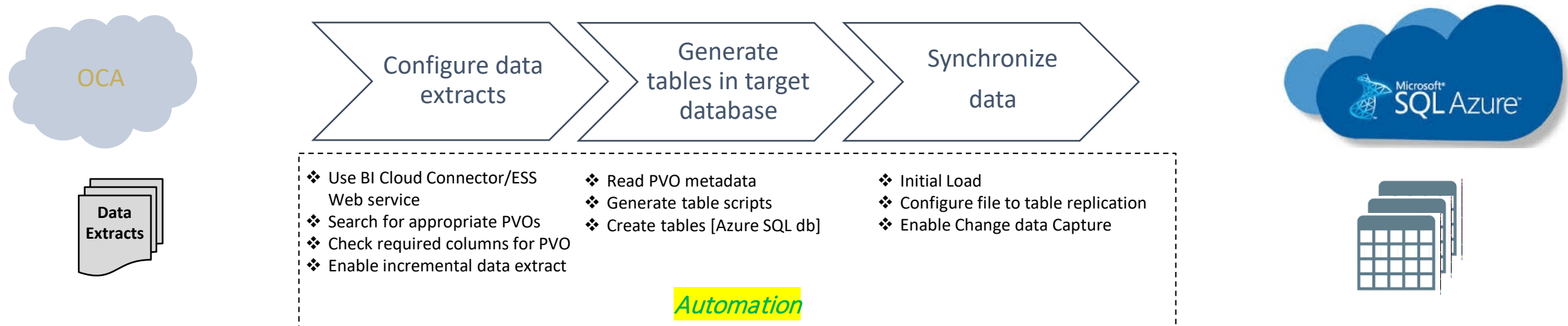
System: Noetix Cloud Analytics Power BI Generator, OCA Extraction Utility



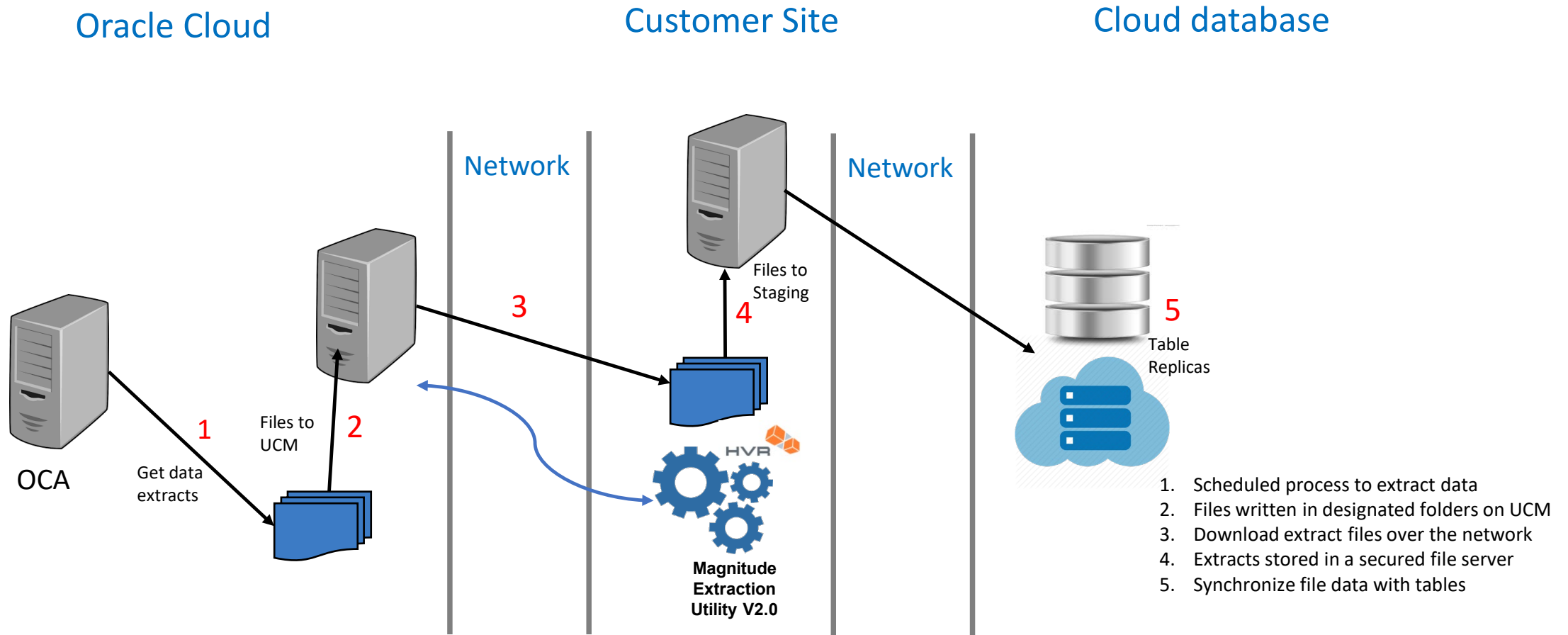
Key Takeaways

- Embedded utility for extracting data from OCA and synchronizing updates with a central, integrated platform for near real-time data retrieval
- Pre-built, extendible NoetixViews for OCA-HCM
- Simple generation of reports into Power BI

Data Movement [OCA -> Database] – Process



Data Movement [OCA -> Database] – Topology



Core HR (Value) - HR Metrics Dashboard - Power BI Desktop

FileHomeViewModelingHelp

CutCopy

PasteFormat Painter

Clipboard

Get DataRecent Sources

Enter DataEdit Queries

External data

Refresh

New PageNew Visual

Insert

Ask A QuestionButtons

Text boxImageShapes

Insert

From MarketplaceFrom File

Custom visuals

Switch ThemeManage Relationships

Relationships

New MeasureNew ColumnNew Quick Measure

Calculations

Publish

Share

1,906

HeadCount

HR Metrics

Current Headcount by Business Unit

Business Unit Name	Headcount	Position Headcount
Algeria Business Unit	9.00	
Argentina Business Unit	4.00	
Australia Business Unit	28.00	
Austria Business Unit	9.00	
Bahrain Business Unit	7.00	
Belgium Business Unit	26.00	
Canada Business Unit	59.00	
Chile Business Unit	10.00	
China Business Unit	67.00	2.00
Colombia Business Unit	9.00	
Total	1,906.00	1,088.00

Headcount as at 1 year ago by Business Unit

Business Unit Name	Headcount	Position Headcount
Algeria Business Unit	9.00	
Argentina Business Unit	4.00	
Australia Business Unit	28.00	
Austria Business Unit	9.00	
Bahrain Business Unit	7.00	
Belgium Business Unit	26.00	
Canada Business Unit	59.00	
Chile Business Unit	9.00	
China Business Unit	67.00	2.00
Colombia Business Unit	9.00	
Total	1,874.00	1,076.00

Total Headcount this year

1,906

Headcount

Total Headcount last year

1,874

Headcount

Involuntary leavers in the last year

1

Involuntary leavers

Voluntary leavers in the last year

8

Voluntary leavers

Position Budget Headcount Variance by Business Unit

Business Unit Name	Headcount	Position Headcount	Headcount Variance
Algeria Business Unit	9.00		-9.00
Argentina Business Unit	4.00		-4.00
Australia Business Unit	28.00		-28.00
Austria Business Unit	9.00		-9.00
Bahrain Business Unit	7.00		-7.00
Belgium Business Unit	26.00		-26.00
Canada Business Unit	59.00		-59.00
Chile Business Unit	10.00		-10.00
China Business Unit	67.00	2.00	-65.00
Colombia Business Unit	9.00		-9.00
Total	1,906.00	1,088.00	-818.00

Position Budget Headcount Varia...

Headcount	Position Headcount	Headcount Variance
1,906.00	1,088.00	-818.00

Visualizations

Fields

Values

Filters

ASSIGNMENT_CATEG is (All)

ASSIGNMENT_STATL is (All)

ASSIGNMENT_TYPE is (All)

BUSINESS_UNIT_NAI is (All)

COUNTRY is (All)

DEPARTMENT_NAM is (All)

EFFECTIVE_DATE is (All)

HR_REASON is (All)

LEGAL_ENTITY_NAM is (All)

LOCATION_CODE is (All)

PERSON TYPE is (All)

OCA_Calendar_Dates

OCA_DEPARTMENT_DETAILS

OCA_PERSON_ASSIGNMENTS_Metri...

ACTION_NAME

ACTION_TYPE

ACTION_TYPE_CODE

ADDRESS_LINE1

ADDRESS_LINE2

ADDRESS_LINE3

ADDRESS_LINE4

ADDRESS_POSTAL_CODE

ADDRESSESPEOADDRESSLINE1

ADDRESSESPEOADDRESSLINE2

ADDRESSESPEOADDRESSLINE3

ADDRESSESPEOADDRESSLINE4

ADDRESSESPEOCOUNTRY

ADDRESSESPEOPOSTALCODE

ADJUSTED_SVC_DATE

ASSIGNMENT_CATEGORY

ASSIGNMENT_CATEGORY_CO...

ASSIGNMENT_END_DATE

ASSIGNMENT_EVENT_COUNT...

ASSIGNMENT_ID

ASSIGNMENT_NAME

ASSIGNMENT_NUMBER

ASSIGNMENT_START_DATE

ASSIGNMENT_STATUS

ASSIGNMENT_TYPE

BUSINESS_GROUP_ID

BUSINESS_GROUP_NAME

BUSINESS_GROUP_NAME Hier...

BUSINESS_UNIT_NAME

HR Metrics

PAGE 1 OF 1

Core HR (Value) - HR Metrics Dashboard - Power BI Desktop

FileHomeViewModelingHelp

Cut

Copy

Paste

Format Painter

Clipboard

Get Data

Recent Sources

Enter Data

Edit Queries

Refresh

External data

New Page

New Visual

Ask A Question

Buttons

Image

Shapes

Insert

From Marketplace

From File

Custom visuals

Switch Theme

Manage Relationships

Themes

New Measure

New Column

New Quick Measure

Calculations

Publish

Share

1,906

HeadCount

HR Metrics

Current Headcount by Business Unit

Business Unit Name	Headcount	Position Headcount
Algeria Business Unit	9.00	
Argentina Business Unit	4.00	
Australia Business Unit	28.00	
Austria Business Unit	9.00	
Bahrain Business Unit	7.00	
Belgium Business Unit	26.00	
Canada Business Unit	59.00	
Chile Business Unit	10.00	
China Business Unit	67.00	2.00
Colombia Business Unit	9.00	
Total	1,906.00	1,088.00

Headcount as at 1 year ago by Business Unit

Business Unit Name	Headcount	Position Headcount
Algeria Business Unit	9.00	
Argentina Business Unit	4.00	
Australia Business Unit	28.00	
Austria Business Unit	9.00	
Bahrain Business Unit	7.00	
Belgium Business Unit	26.00	
Canada Business Unit	59.00	
Chile Business Unit	9.00	
China Business Unit	67.00	2.00
Colombia Business Unit	9.00	
Total	1,874.00	1,076.00

Total Headcount this year

Involuntary leavers in the last year

Headcount Variance

Headcount	Headcount Variance
1,088.00	-818.00

Data source settings

Manage settings for data sources that you have connected to using Power BI Desktop.

Data sources in current file

Global permissions

Search data source settings

ncademoserver.database.windows.net:ncademodb

Change Source...

Edit Permissions...

Clear Permissions

Visualizations

Fields

HR Metrics

1,739

HeadCount

HR Metrics

1445
Hires

140
Terminations

333
Promotions

0
Rehires

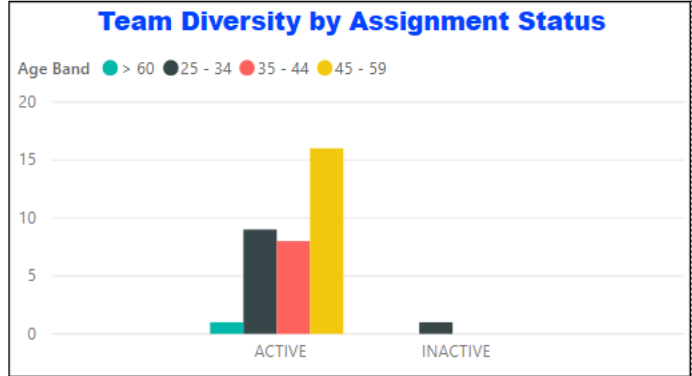
Span Of Control		
Manager Name	Span of Control	Department Name
Zimmer, Alex	3.00	Food & Commercial Department
Zhang, Mei	3.00	Accounting CN
Zhang, Mei	1.00	Ledger CN
Zhang, Mei	1.00	Payables CN
Zhang, Mei	1.00	Receivables CN
Zetticci, Irene	8.00	Human Resources IT
Zawadzki, Dariusz	10.00	Remuneration PL
Yoshida, Asuka	1.00	Intensive Care HC US
Yeung, Khim	1.00	Recruitment SG
Total	1,739.00	

45.40
Average age

0.46
Average tenure

668
Managers

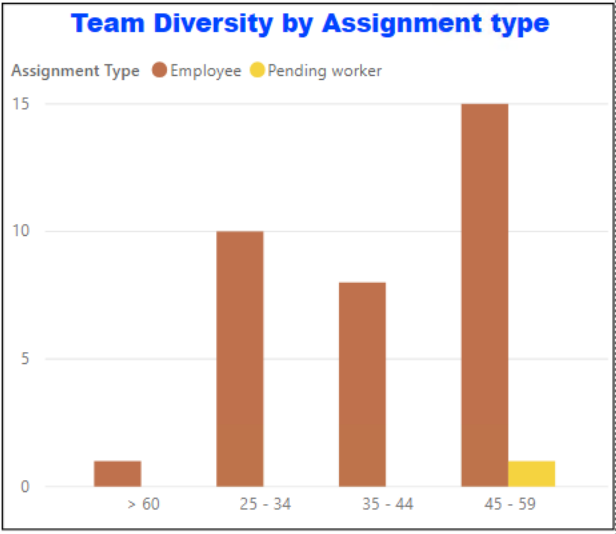
181.13
EmpToCWK_Ratio



Team Diversity by BU		
Business Unit Name	Age Band	Headcount
US1 Business Unit	> 60	1.00
Belgium Business Unit	25 - 34	1.00
Denmark Business Unit	25 - 34	1.00
Fin Svcs US Business Unit	25 - 34	1.00
Finland Business Unit	25 - 34	1.00
France Business Unit	25 - 34	1.00
Italy Business Unit	25 - 34	1.00
UK Business Unit	25 - 34	2.00
US1 Business Unit	25 - 34	2.00
France Business Unit	35 - 44	1.00
Healthcare US Business Unit	35 - 44	1.00
Netherlands Business Unit	35 - 44	1.00
Spain Business Unit	35 - 44	1.00
Sweden Business Unit	35 - 44	1.00
Switzerland Business Unit	35 - 44	1.00
Total		35.00

Team Diversity by Dept		
Department	Age Band	Headcount
Accounting US	25 - 34	3.00
Accounting US	35 - 44	1.00
Accounting US	45 - 59	1.00
Applications and Services	> 60	1.00
Applications and Services	25 - 34	7.00
Applications and Services	35 - 44	7.00
Applications and Services	45 - 59	15.00
Total		35.00

Team Diversity by Job		
Job	Age Band	Headcount
Manager	> 60	1.00
Asset Manager	25 - 34	1.00
Clerk	25 - 34	2.00
Lead Project Specialist	25 - 34	5.00
Project Specialist	25 - 34	2.00
Account Executive	35 - 44	1.00
Cost Accountant	35 - 44	1.00
Lead Project Specialist	35 - 44	4.00
Manager	35 - 44	1.00
Program Director	35 - 44	1.00
Accountant	45 - 59	1.00
Accounting Clerk	45 - 59	1.00
Human Resources Specialist	45 - 59	1.00
Lead Project Specialist	45 - 59	1.00
Manager	45 - 59	1.00
Total		35.00



Visualizations

Fields

Search

OCA_Calendar_Dates

OCA_DEPARTMENT...

OCA_PERSON_ASSI...

Add data fields here

Filters

Page level filters

Add data fields here

Report level filters

ASSIGNMENT_CATEG

is (All)

ASSIGNMENT_STATL

is (All)

ASSIGNMENT_TYPE

is (All)

BUSINESS_UNIT_NAI

is (All)

COUNTRY

is (All)

DEPARTMENT_NAM

is (All)

EFFECTIVE_DATE

is (All)

HR_REASON

is (All)

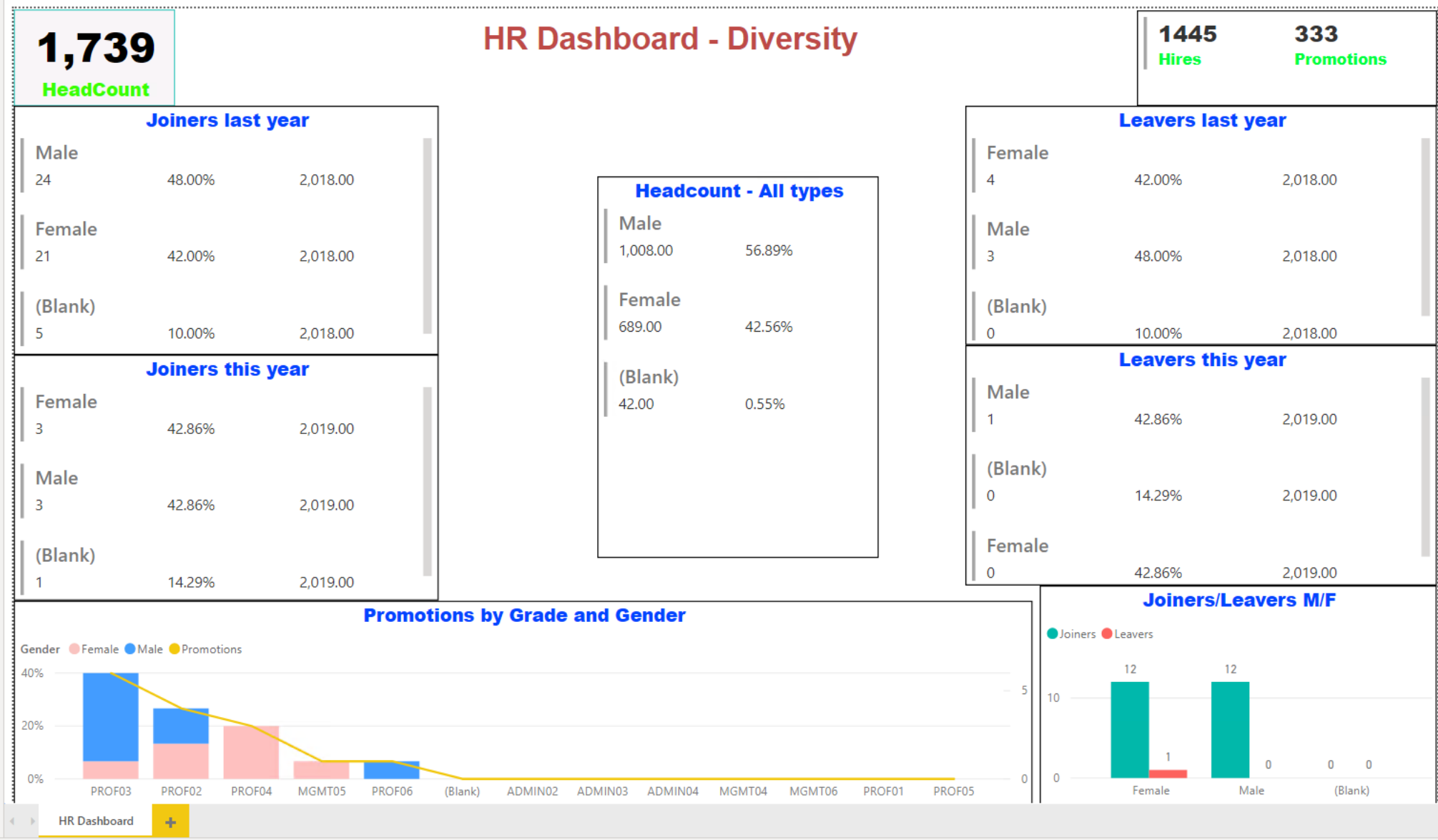
LEGAL_ENTITY_NAM

is (All)

LOCATION_CODE

is (All)

PERSON TYPE



Visualizations

Fields

Search

OCA_Calendar_Dates

OCA_DEPARTMENT...

OCA_PERSON_ASSI...

Values

Add data fields here

Filters

Page level filters

Add data fields here

Report level filters

ASSIGNMENT_CATEG is (All)

ASSIGNMENT_STATL is (All)

ASSIGNMENT_TYPE is (All)

BUSINESS_UNIT_NAI is (All)

COUNTRY is (All)

DEPARTMENT_NAM is (All)

EFFECTIVE_DATE is (All)

HR_REASON is (All)

LEGAL_ENTITY_NAM is (All)

LOCATION_CODE is (All)

PERSON_TYPE is (All)



Demonstration

Use Case: Analyzing relational data across multiple sources, deployments

Role: Analyst / SME

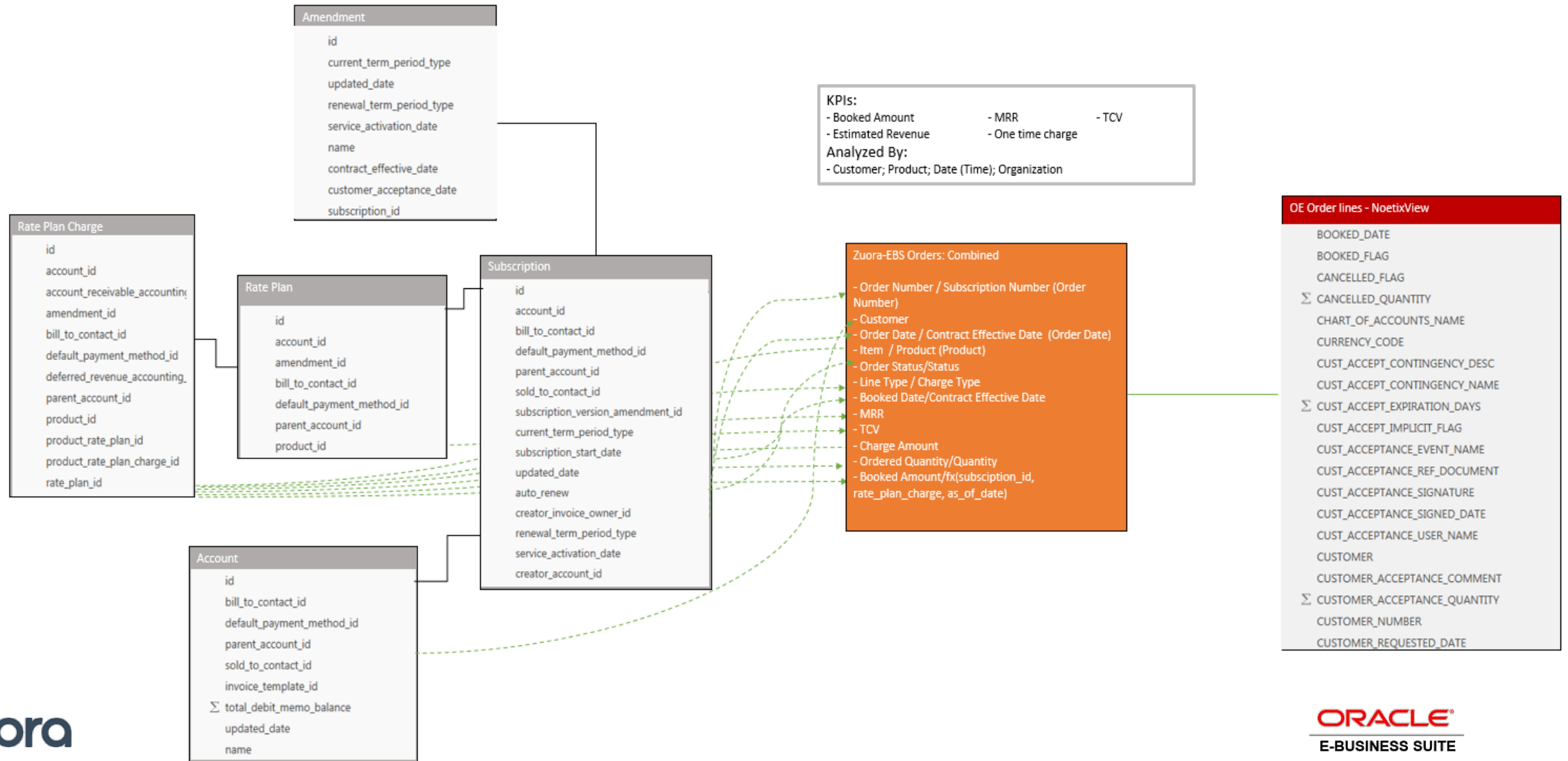
System: Noetix Cloud Analytics View Editor



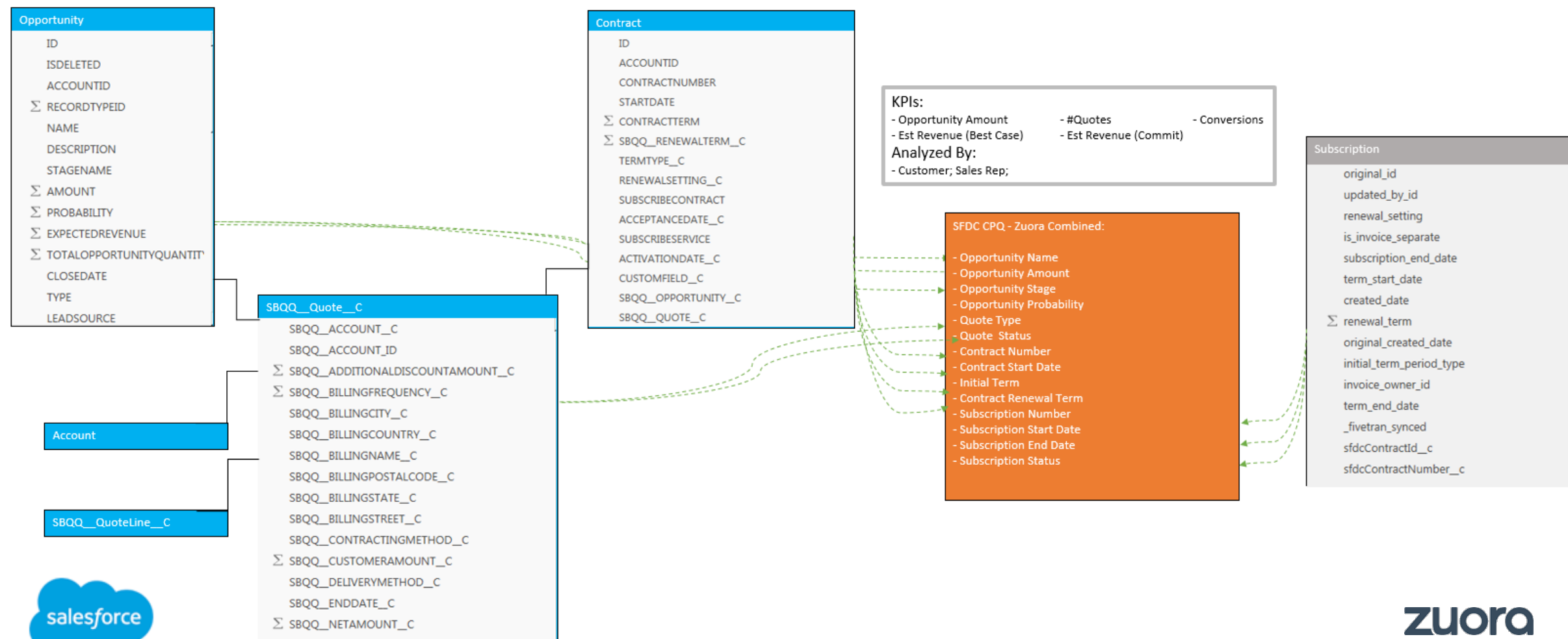
Key Takeaways

- Integrated platform to allow combined reporting across various sources regardless of deployment
- Pre-built, extendible NoetixViews for other applications
- View Editor allows creation of new views or modification of pre-built views to meet unique business requirements

Zuora – Oracle EBS Reporting



Salesforce - Zuora

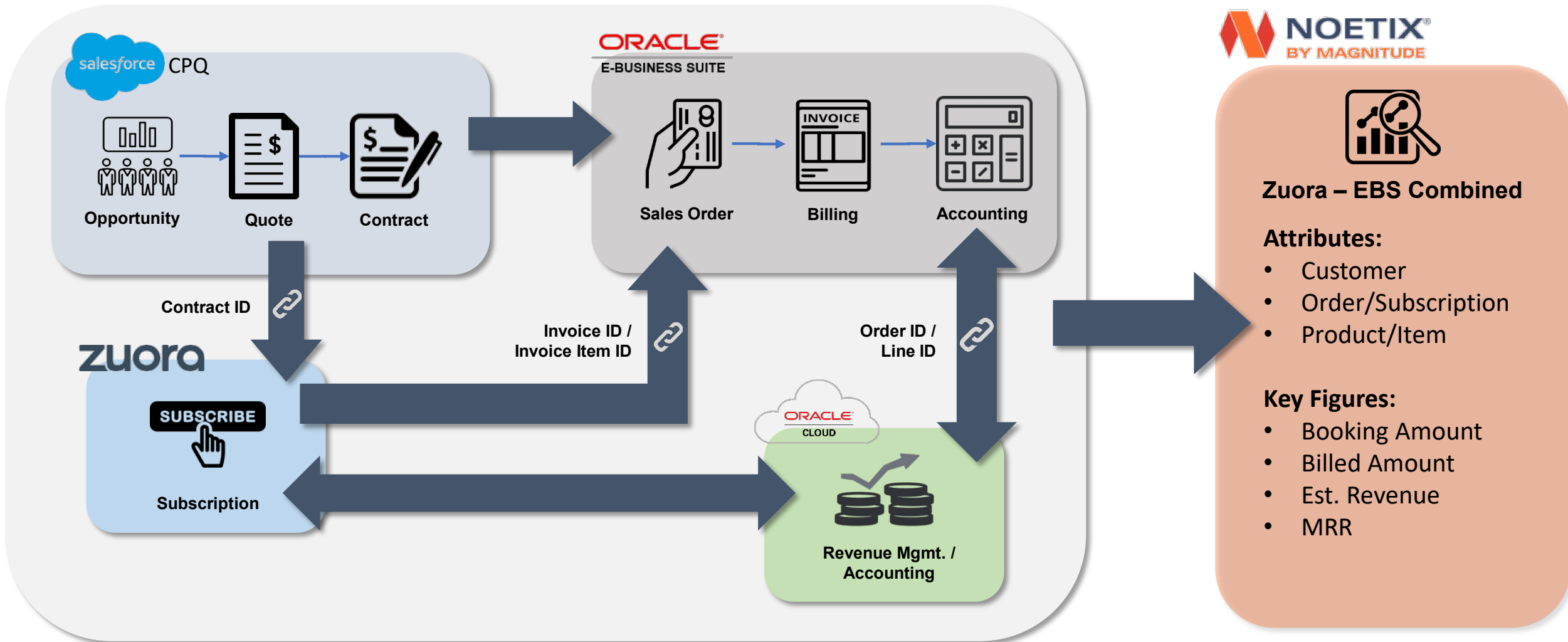


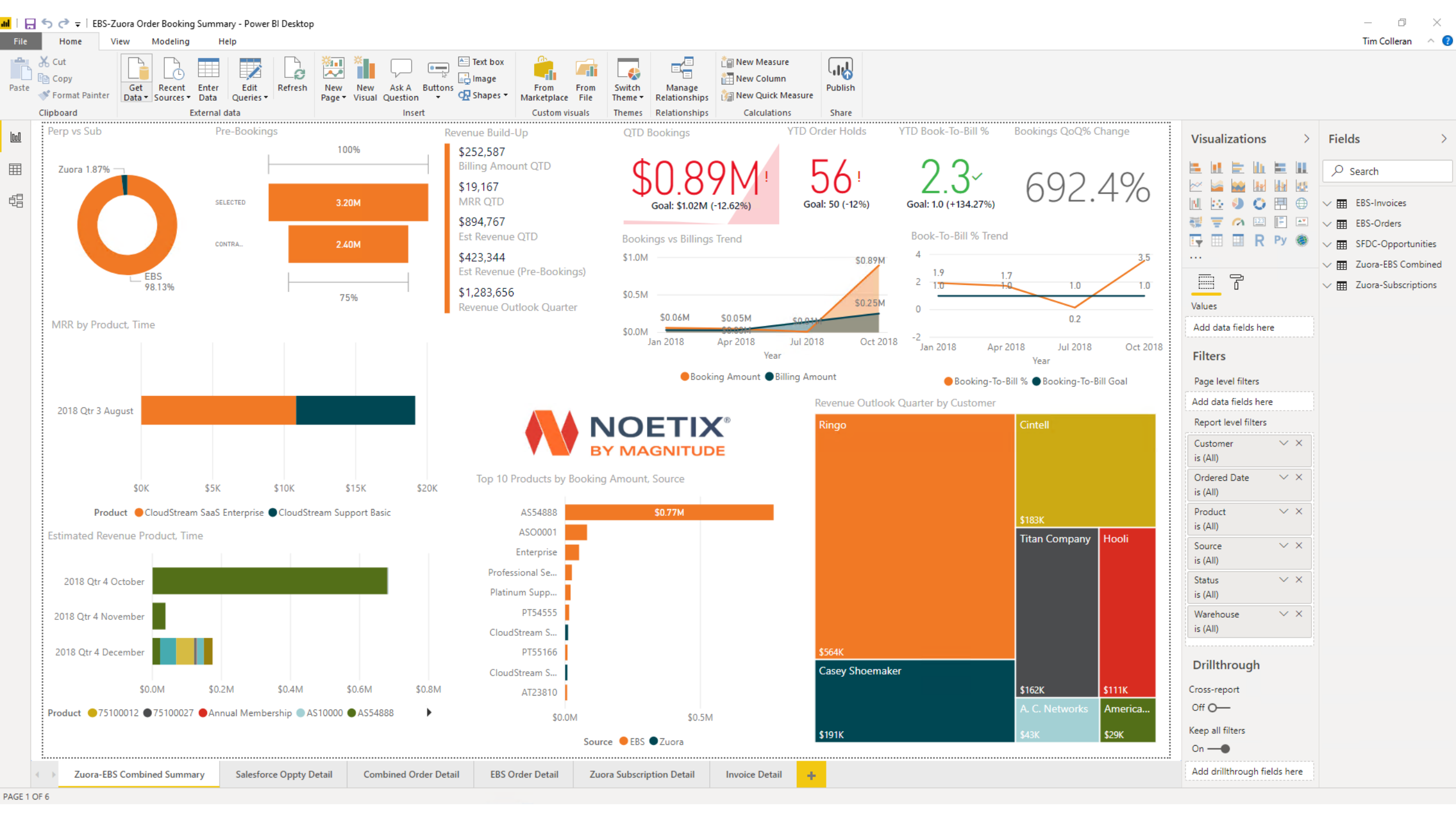
CPQ



zuora

Combined Reporting





Customer Stories - Designer and Manufacturer of Modern Furniture

- Publicly traded based out of eastern PA
- \$1.16 billion market cap with \$1.3 billion in annual sales
- Growing 15% annually
- 2 major acquisition in the last 3 years
- New Noetix customer in 2018

■ Challenges to Overcome

- Many different ERP and legacy systems used to manage all aspects of the business
 - JD Edwards
 - EBS environments (2)
 - Salesforce
 - Oracle Sales Cloud
 - Concur (Employee Expense)
 - Ceridian (HCM)
 - Other legacy systems and home grown MS Access databases
- Wanted to move away from Oracle Discoverer to Tableau with data from all source systems being available through Amazon RedShift
- Reporting transformation project

■ How Noetix Helped: Centralized Reporting from all Source Applications within Tableau

- Data replication into RS with real-time NoetixViews for EBS and JDE
- Noetix Analytics for strategic analysis and trending across multiple sources including Salesforce, Oracle Cloud, and Concur
- Conversion of Discoverer reports into Tableau
- Compatibility of Noetix Generator for Tableau with RS

Customer Stories - Sporting Goods Manufacturer

- Privately-owned based out of Southern CA
- Incorporated in 1979
- Recently acquired in 2017 for \$425 million
- Trusted brand in its industry by many professional athletes
- Noetix Customer Since 2002

- Current user of EBS Analytics via Cognos
 - DB Updates were slow
 - Reporting was slow
 - Needed near real-time content (daily updates currently)
- How Noetix Helped
 - Moved EBS data to Autonomous Data Warehouse on Oracle Cloud
 - Tuned Informatica ETL leading to a 10X reduction in update/refresh times
 - Update/refresh cycle reduced from daily to hourly (with some @ 15 minute intervals)
 - Report performance improved 5-40X

What is Noetix Today? - Summary

