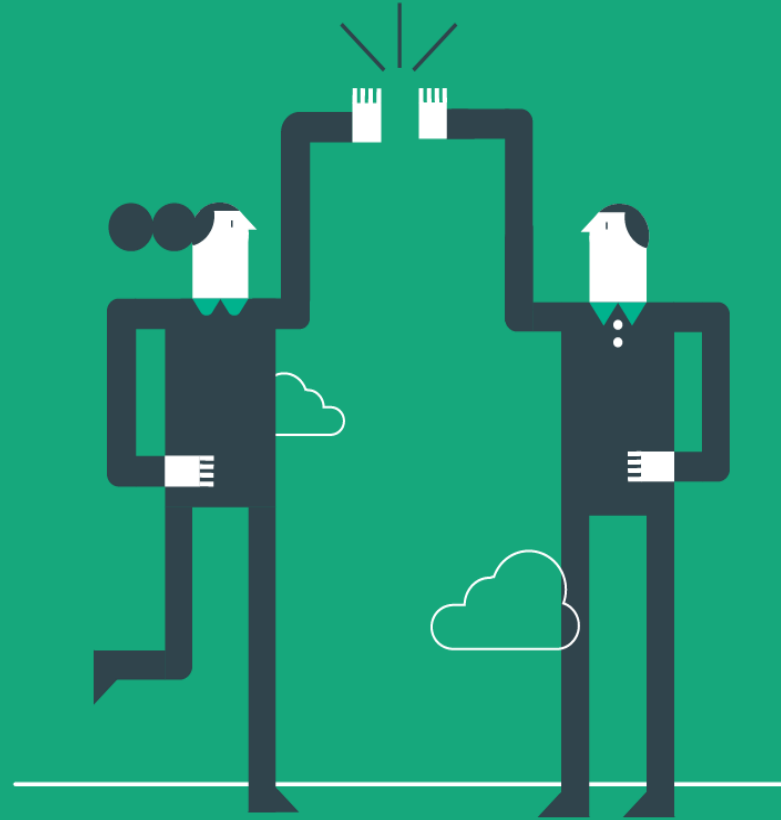




# ITCROSS SOLUTIONS FOR JD EDWARDS IN MEXICO



WHO WE  
ARE?



# HELLO WE ARE ITCROSS

ITCROSS is the company in **Latin America** that helps you transforming and moving your business to the Cloud, offering solutions and **Oracle ERP** integration and implementation services, that will make your company evolve fast.

ITCROSS is **Oracle Platinum Partner**, and it is recognized for doing **global implementations**, localizations, developing fiscal solutions that complement JD Edwards and ERP Cloud, **integrating** them with your other systems using Oracle **PaaS** platform and the most modern development technologies.



**The world evolves and  
so do businesses.  
Be a part of this  
change.**



# ITCROSS NUMBERS



**3 offices**, Mexico, Argentina and USA.



**More tan 18 years experience**  
implementing Oracle ERPs.



**Oracle Platinum Partners since 2013.**



**100%** positive clients' references



**4 Oracle Awards.**



**More tan 76 projects** in Latin America.



**More tan 20** global implementations.




**5 Oracle Validated Integration** solutions.




**12 Fiscal Solutions for** JD Edwards and  
ERP Cloud aplicables to México, Argentina,  
Peru, Colombia, Uruguay, Chile, Ecuador,  
Venezuela, and others.



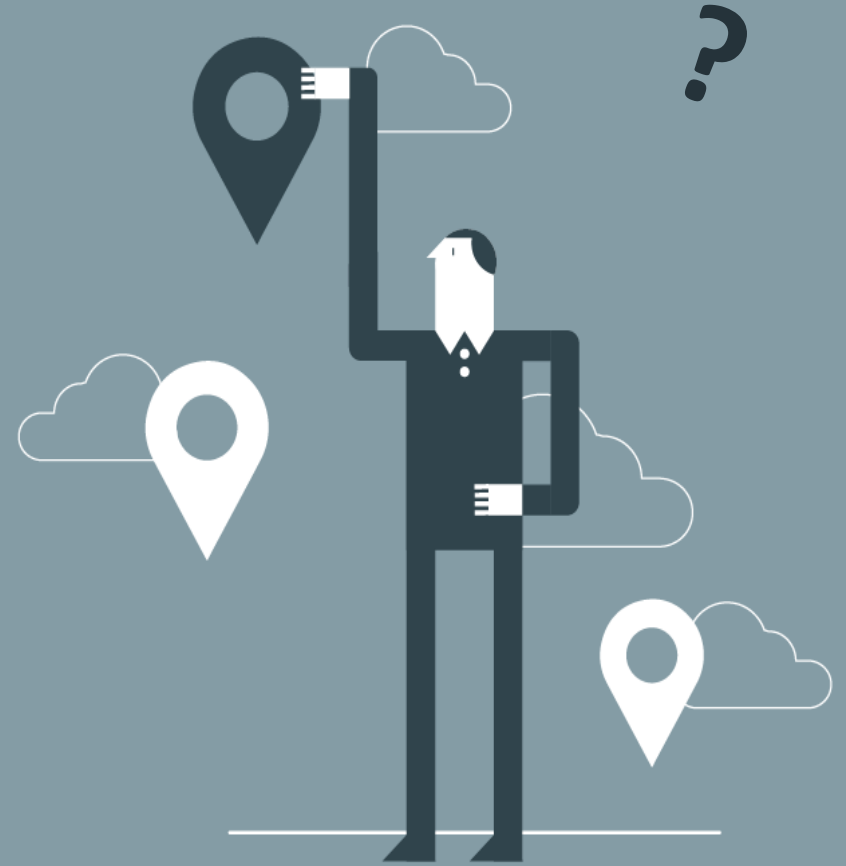
**Quest Partners** – sice 2012. 



**OAUG Partners** –since 2017. 



# WHERE WE ARE?



## USA

📍 3801 PGA Boulevard (33410)  
Palm Beach Gardens, Florida.  
☎ +1-386-246-7460

## Argentina

📍 Sarmiento 938 6n  
Buenos Aires City.  
☎ +54-11-3220-4890

## México

📍 Periférico Blvd. Manuel Avila Camacho 36, 12<sup>th</sup>  
Floor, Torre Esmeralda II, Lomas de Chapultepec,  
☎ MEXICO City  
+ 52-55-9171-1600



\* PARTNERS IN BRAZIL, EUROPE AND ASIA.



# PRODUCTS AND SERVICES



# ITCROSS SOLUTIONS



Fiscal Solutions for Mexico. JDE



Bank Payment Solution. JDE



Voucher Automation Solution. JDE



E-Invoice Integration Latin America. JDE.




Tax Rates Automation Argentina. JDE.






# DO YOU KNOW WHAT ORACLE VALIDATED INTEGRATIONS ARE?

## Oracle Validated Integration Delivering Customer Confidence



**Validated Integration**  
Oracle Applications

[oracle.com/partners/goto/validate](https://oracle.com/partners/goto/validate)




**Our company has achieved Oracle Validated Integration!**

With Oracle Validated Integration, Oracle Applications customers can be confident that our company's:

- Integration has been tested and validated as functionally and technically sound
- Solution is integrated with the most current release of an Oracle Application in a reliable, standardized way
- Integration operates and performs as documented

Oracle Validated Integration is product and version specific – ask us for details.



Copyright © 2015 Oracle and/or its affiliates. All rights reserved. |



The "OVI" solutions guarantee operation because they were developed under the same standards set by Oracle for JD Edwards.



# BENEFITS

## For customers who have our solutions



- **AUTOMATION:** simplify and reduce timing on financial tasks.
- **MEET** changes on time.
- **AVOID TASKS DUPLICATION** and human mistakes.
- **EFFICIENCY:** Automating means saving time on operational tasks and having more time analysis.
- **SAVINGS:**
  - The solutions can be used for several companies or subsidiaries, even if they have different PACs.
  - It is configurable. Users are trained for modifying setup the PAC vendor changes: it is not necessary to develop any integration again.
  - There's no development project and it is quick to implement.
  - Oracle Guarantee: they are Oracle Validated Integration.
  - You receive software updates. Quick and cheaper reaction to SAT changes.
  - Support service: ITCROSS will be responsible for user support.



# ITCROSS SOLUTIONS AND ORACLE LOCALIZATION FOR MÉXICO



## ITCROSS FISCAL SOLUTION FOR MEXICO. ORACLE LOCALIZATION COVERAGE

- Historically we have considered the Mexican localization as simple and stable, with clear legal requirements and few changes.
- Included in JD Edwards E1 Software:
  - VAT 16%
  - A/P Withholdings “calculation” on payments.
  - VAT paid and collected. Localized vouchers and invoice posting.
  - Electronic Accounting
    - Chart of Accounts
    - Accounts balances
    - Journal entries



# LOCALIZATION GAPS



**PAYMENT PEDIMENTO DIOT**  
**COMPLEMENT** EXPORTS COMPLEMENT

**ELECTRONIC  
WITHHOLDINGS**

**INV TRANSFERS**

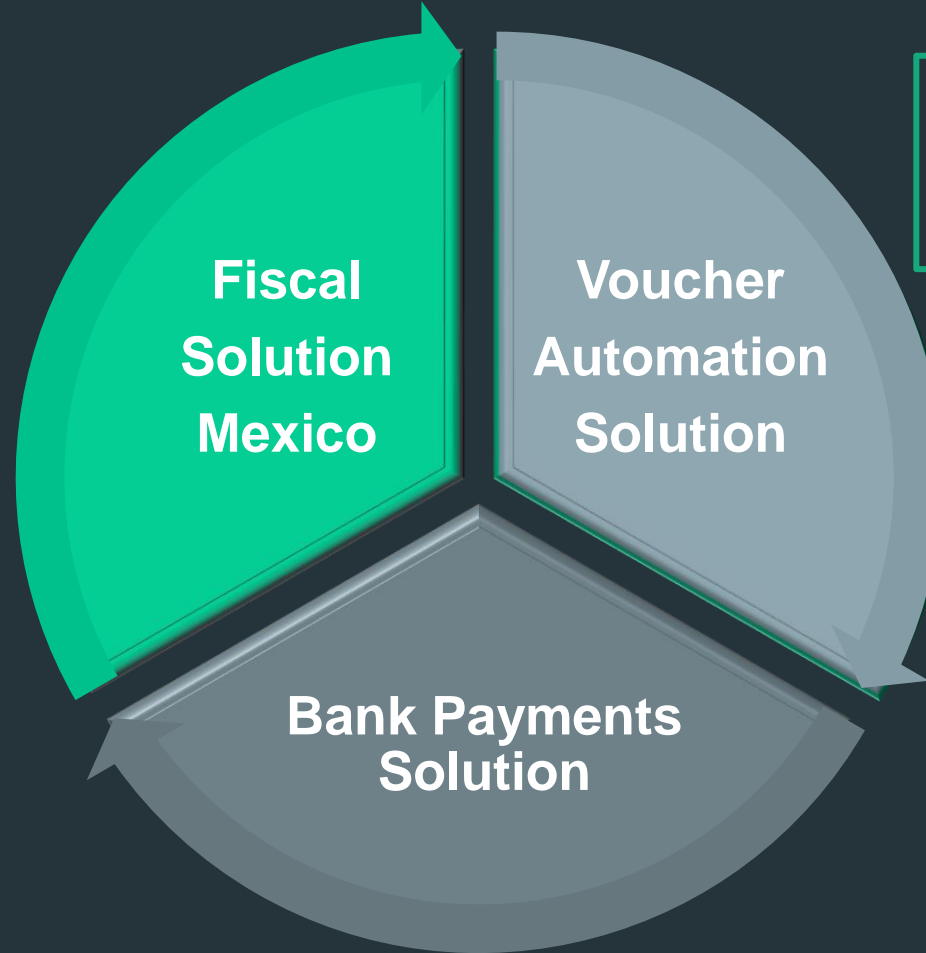
**AUTOMATIC VOUCHERS  
UPLOAD FROM XML FILE**

**BANK PAYMENT  
FILES GENERATION**

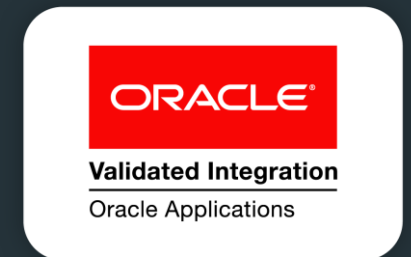
**UUID AUTOMATIC UPDATE**



# ITCROSS SOLUTIONS FOR MEXICO



**THEY DO COMPLEMENT  
LOCALIZATION.  
THEY DO NOT REPLACE IT!**



# ITCROSS FISCAL SOLUTION MEXICO



# ITCROSS FISCAL SOLUTION FOR MEXICO FUNCTIONALITIES.



- ✓ Electronic Invoice Integration (between JDE and PACs)
- ✓ UUID field automatic update (SAT e-invoice authorization number)
- ✓ JDE SOP y A/R print programs.
- ✓ CFDI 3.3 files generation: Payment Complement file, MX BOL file, Exports complement file.
- ✓ Pedimento number entry on Purchase Order Processing receipts.
- ✓ E-withholdings (TXT file)
- ✓ DIOT reporting (in TXT format)





# ITCROSS FISCAL SOLUTION FOR MEXICO FUNCTIONALITIES.



- ✓ Configurable Adendas.
- ✓ Sales Order relationship with collections in installments.
- ✓ Cash requirement report considering withholdings.
- ✓ VAT reports - collected and paid
- ✓ SOP print messages can be part of txt. Customer Master fields, can be part of the txt. JDE cross reference can be used to retrieve data.
- ✓ Tables that are part of the mapping:

ORACLE®

Validated Integration

Oracle Applications



# Tables the solution can map:

## SOP

F0101	Address Book Master (F0101)
F0111	Address Book Who's Who (F0111)
F0115	Address Book Phone Num (F0115)
F01151	Electronic Address (F01151)
F0116	Address by Date (F0116)
F03012	Customer Master By Ln (F03012)
F4101	Item Master
F4102	Item Branch Plant
F4104	Item Cross Reference (F4104)
F4108	Lot Master (F4108)
F4201	Sales Order Header
F4211	Sales Order Detail

## A/R

F0101	Address Book Master (F0101)
F0111	Address Book Who's Who (F0111)
F0115	Address Book Phone Num (F0115)
F01151	Electronic Address (F01151)
F0116	Address by Date (F0116)
F03012	Customer Master By Ln (F03012)
F03B11	Customer Ledger (F03B11)
F4104	Item Cross Reference (F4104)

**ORACLE**

**Validated Integration**

Oracle Applications



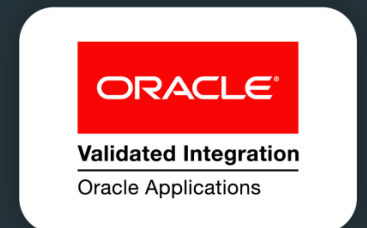
# **ITCROSS BANK PAYMENTS SOLUTION**



# ITCROSS SOLUTION. BANK PAYMENTS



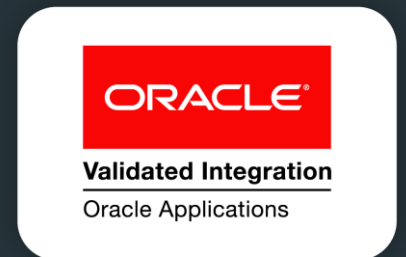
- ✓ It allows you to create in JDE the payment file layouts your bank requests, and to automatically generate them from A/P manual and automatic payment functionalities.
- ✓ The layout or integration template is CONFIGURABLE, easy to modify and to create.
- ✓ It can generate txt or XML file types.
- ✓ 100% developed within JD Edwards.



# ITCROSS SOLUTION. BANK PAYMENTS



- ✓ Avoids duplication of payments and manual/human intervention between JDE and the bank, by importing the file generated by JDE in the bank site or software.
- ✓ Allows batch processing.
- ✓ Allows multiple data separators.
- ✓ If your company is a global one, keep in mind it can be used in all countries, as it is not localization related.



# **ITCROSS VOUCHER AUTOMATION SOLUTION**



# ITCROSS SOLUTION. VOUCHER AUTOMATION.

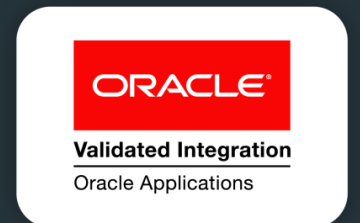


## ✓ Vendor's vouchers Integration with JDE.

- Between JD Edwards EnterpriseOne and the xml file you receive directly from vendors.
- Friendly and easy to set up.

## ✓ CFDI Automatic Update (UUID)

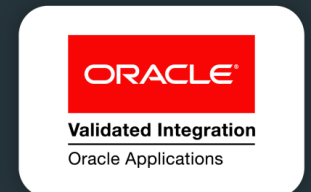
- Automatic UUID field update on JDE voucher (36-digit electronic invoice number).
- Automatic UUID field update on vendor's payment complement records.



# ITCROSS SOLUTION. VOUCHER AUTOMATION.



- ✓ It allows the creation of Accounts Payable vouchers (voucher logging or pre-invoices) directly from the vendor's xml.
- ✓ These draft vouchers can then be matched with POs, you can change the expense accounts, and finally validate it.
- ✓ It allows you to process the UUID update on vendor's payment complement file.
- ✓ It lets you process vouchers with discounts correctly.
- ✓ It allows you to process EXEMPT vouchers , and change the default tax area.
- ✓ Allows the use of VMA standard JDE functionality, In case the PO is informed on the vendor's addendum. In this way, voucher matching is automatic as well.
- ✓ It offers a report with processing errors for troubleshooting.





# ITCROSS SOLUTION. VOUCHER AUTOMATION. FLOW.



The vendor sends the xml to the client. The client's PAC does the validation with SAT.

PAC: After validating the xml with the SAT, the PAC saves the approved axml in a network folder JDE has Access to.

ITCROSS Integration retrieves the Validated xml, maps the fields into JDE, including UUID.

ITCROSS integrations runs the A/P batch process and generates all xml files with voucher logging functionality into JDE

JDE: The user reviews the voucher logging, assigns expense account, and confirms the voucher with JDE std functionality.



Please request demo videos and client references to:

 [maggie.cattaneo@it-cross.com](mailto:maggie.cattaneo@it-cross.com)





[www.it-cross.com](http://www.it-cross.com)  
[info@it-cross.com](mailto:info@it-cross.com)

