

Oracle Analytics Cloud

Is it the beginning of end of OBIEE/OBIA?



NCOAUG
NORTH CENTRAL ORACLE APPS USER GROUP
TRAINING DAY
AUGUST 1, 2019

NCOAUG
NORTH CENTRAL ORACLE APPS USER GROUP
TRAINING DAY
AUGUST 1, 2019



Oracle Analytics Cloud:

Is it the beginning of end of OBIEE/OBIA?



InfosemanticsSM
People first. Driving solutions together.



Gold
Partner

- Established in 2001
- User Community Focused
- People First
- Global Reach – Offices in US, Philippines, and India
- www.Infosemantics.com
 - R12.1.3, R12.2, public vision instances
 - Presentations on functional and technical topics
 - Public OBIEE/OBIA Sandbox Instance

Agenda

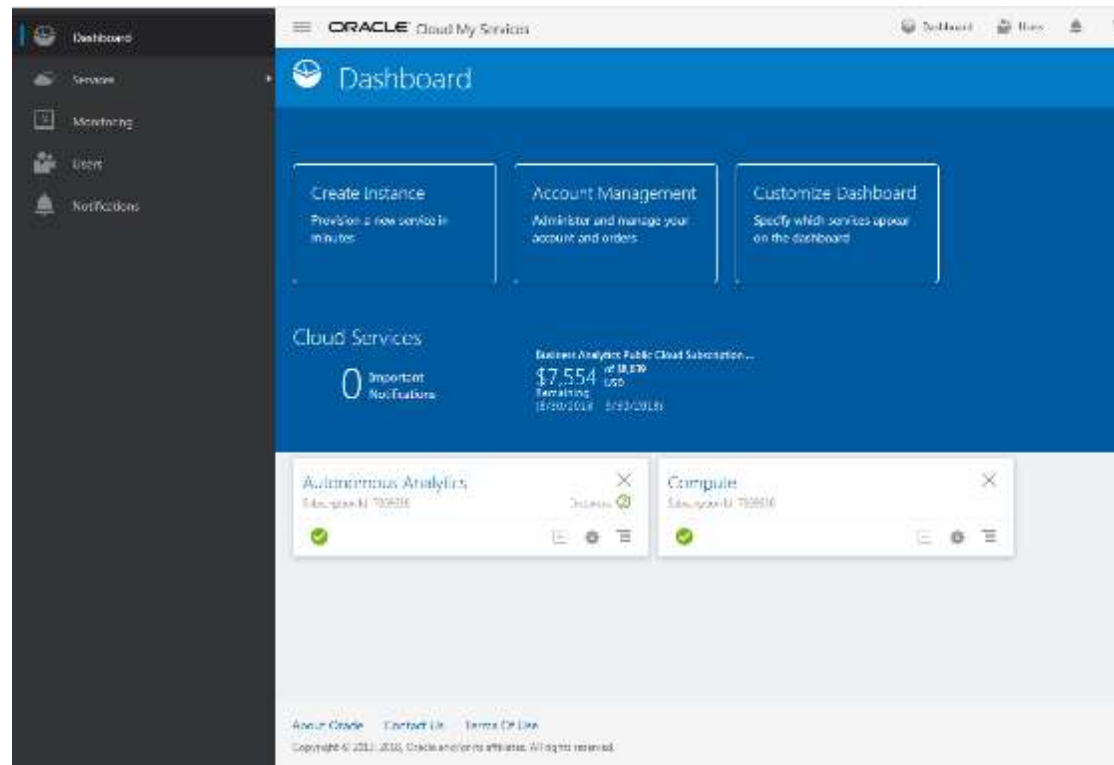
- Introduction to OAC
- Oracle Business Intelligence Enterprise Edition (OBIEE)
 - What it means for existing OBIEE investments
 - OAC or OBIEE for new customers?
- Oracle Business Intelligence Applications (OBIA)
 - Discuss OAC fit
- Oracle Fusion Transactional Business Intelligence (OTBI)
- Summary
- Q & A

Oracle Analytics Cloud (OAC)

- Complete BI solution capabilities on the cloud for easy accessibility anywhere
- No infrastructure investments
 - No hardware, software installs
 - Oracle performs upgrade, backups and patching – Autonomous model option
- Rapid analytics prototyping capabilities
 - Self-service analytics for Business Users
 - Based on OBIEE / BICS technology
- Data Visualizations, Data Discovery, and Data Collaboration features
- Supports Enterprise BI Scale or can co-exist with on premise BI solutions

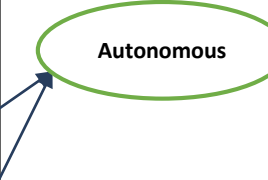
Oracle Analytics Cloud (OAC)

- It is an Oracle Platform as a Service model (PaaS)
 - Subscriptions are based on configuration sizing, usage, and how it is managed



Oracle Analytics Cloud (OAC) - Products

Product	Oracle Cloud Infrastructure	Managed By...
Oracle Analytics Cloud	Oracle Cloud Infrastructure	Oracle
Oracle Analytics Cloud Subscription	Oracle Cloud Infrastructure	Oracle
Oracle Analytics Cloud – Classic	Oracle Cloud Infrastructure - Classic	Oracle User (Customer)



- Main difference is in how you deploy and manage your services on Oracle Cloud

** Courtesy Oracle Documentation

<https://docs.oracle.com/en/cloud/paas/analytics-cloud/acsgs/what-is-oracle-analytics-cloud.html#GUID-211E3547-0A88-4ACB-8F49-74343092F2B5>

Oracle Analytics Cloud (OAC) - Editions

Edition	OAC	OAC Subscription	OAC Classic
Standard	Data Visualization	Data Visualization	Data Visualization Essbase
Essbase	Data Visualization Essbase	Essbase	Data Visualization Essbase
Enterprise	Data Visualization Essbase Business Intelligence	Business Intelligence (with Data Visualization)	Data Visualization Essbase Business Intelligence

** Courtesy Oracle Documentation

<https://docs.oracle.com/en/cloud/paas/analytics-cloud/acsgs/what-is-oracle-analytics-cloud.html#GUID-211E3547-0A88-4ACB-8F49-74343092F2B5>

Oracle Analytics Cloud (OAC) – Enterprise Edition

- Includes Oracle Database and storage in the Cloud
- Includes Oracle Essbase in the Cloud
- OBIEE interface view available within OAC Enterprise
- Oracle SmartView plug-in to Excel to connect to variety of data sources
- Extensive Visualizations
 - Based on VA in OBIEE12c and DVCS
- Includes predictive modeling
 - Data profiling, data quality issues using scoring
- BI Ask – keyword searches

Oracle Analytics Cloud (OAC) – Data Loads and Modeling

- Self-service data loading of Excel data, ASO and BSO cubes output from Essbase etc.
- Connect to relational, cloud applications, and other data sources directly
 - Modeling available in OAC when connecting to relational
- Data Extracts into Oracle Database Cloud available via Oracle delivered tools

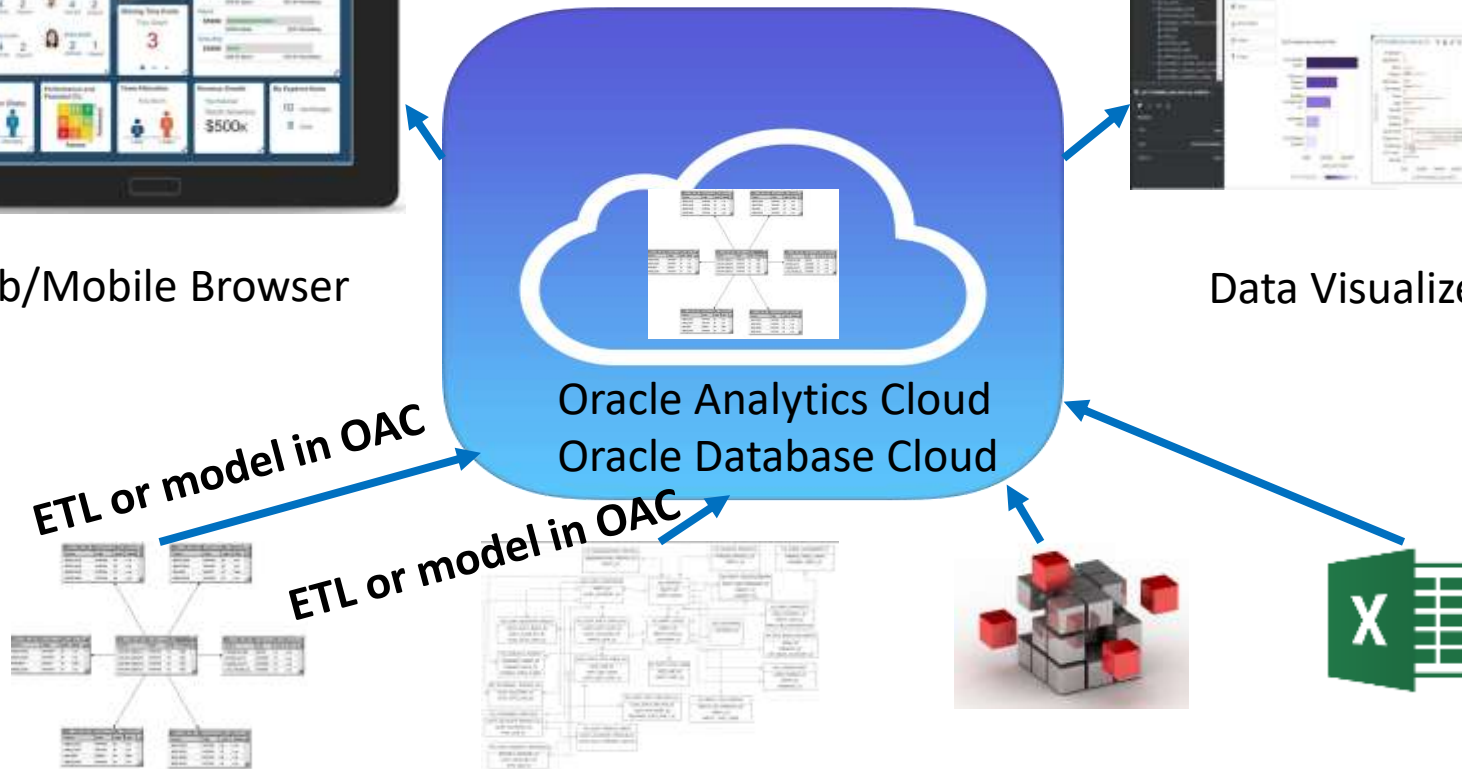
Oracle Analytics Cloud (OAC) – Data Loads and Modeling



Tab/Mobile Browser



Data Visualizer/Dashboards/Reports



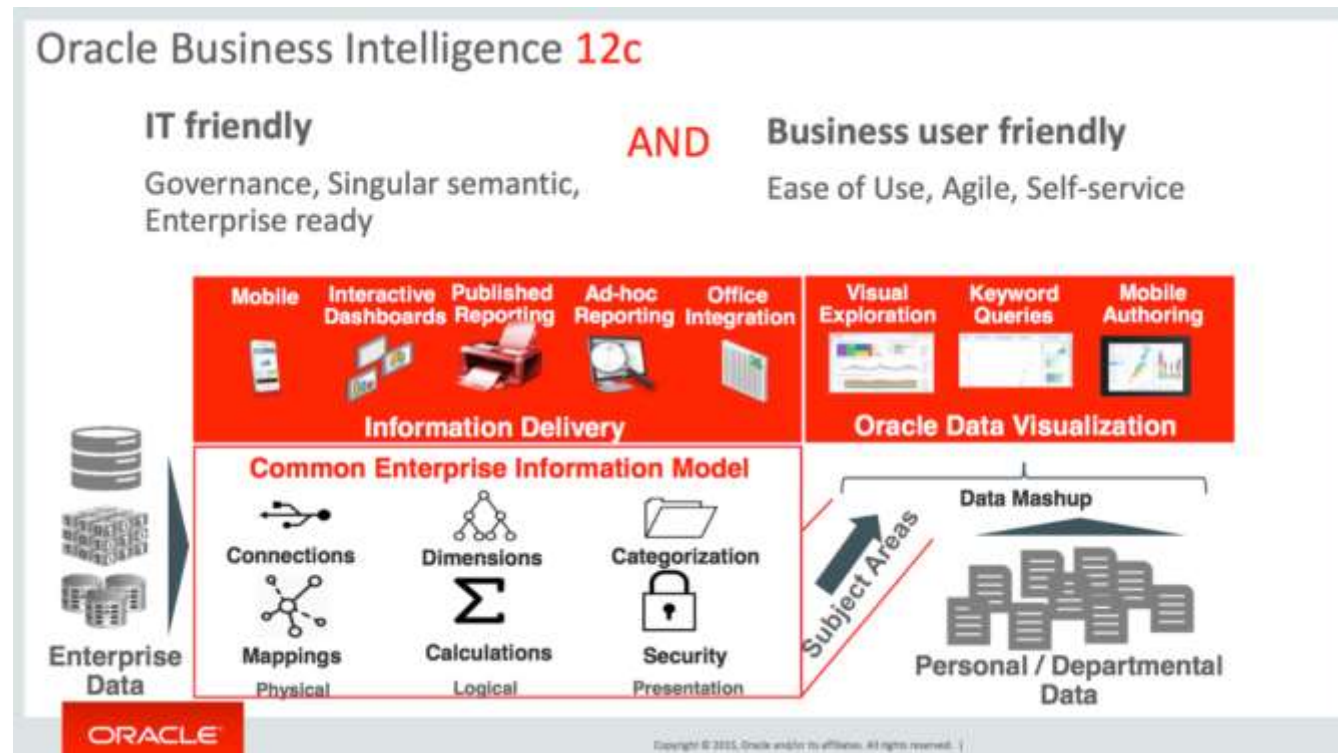
Oracle Analytics Cloud (OAC) – Data Loads and Modeling

- Modeling to the scale of Enterprise data sources including Oracle EBS, Data Warehouses is a challenge
 - Data extracts from Data Sync, REST APIs, Developer tools into Oracle Database cloud if needed, is a challenge – ETL Lite
 - Alternative - OBIEE Administrator tool for modeling (RPD) is a great alternative, then Lift and Shift to OAC – next slides

Oracle Business Intelligence Enterprise Edition

- What it means for OAC

High Level Overview



Oracle Business Intelligence Enterprise Edition

- What it means for OAC

- Major development areas to consider within OBIEE for OAC fit
 - End-User Catalog – reports, dashboards, prompts, BI Publisher reports, Schedules, security, and others
 - Semantic Layer (RPD) – metadata related to a data warehouse or a data source is stored, including business mapping to physical data sources, calculations, data source merges, integration, hierarchies, and several other key areas
- OAC fit Scenario1 – consider a Customer with above investments made with OBIEE
 - Consider Lift and Shift – a co-existence model
- OAC fit Scenario2 – brand new customer with requirements to integrate data from multiple data sources (including EBS), extensive modeling effort involved within OAC
 - Requires OBIEE Administrator tool for modeling, then Lift and Shift

Oracle Business Intelligence Enterprise Edition

- What it means for OAC

■ OAC as an alternative to fresh OBIEE on-premise deployment (Scenario 2)

- Pre-built content for Oracle EBS is available in the marketplace from third-party SIs and Oracle Partners

https://cloudmarketplace.oracle.com/marketplace/en_US/listing/41744311

■ Existing OBIEE environment

- Compliments OBIEE – Co-existence deployment; Lift and Shift RPD and Catalog over to OAC
- Connect OAC to other sources for data mashups and other analytics – supports VPN between OAC Cloud Server and data centers

■ What about OBIEE with a Data Warehouse?

Oracle Business Intelligence Applications

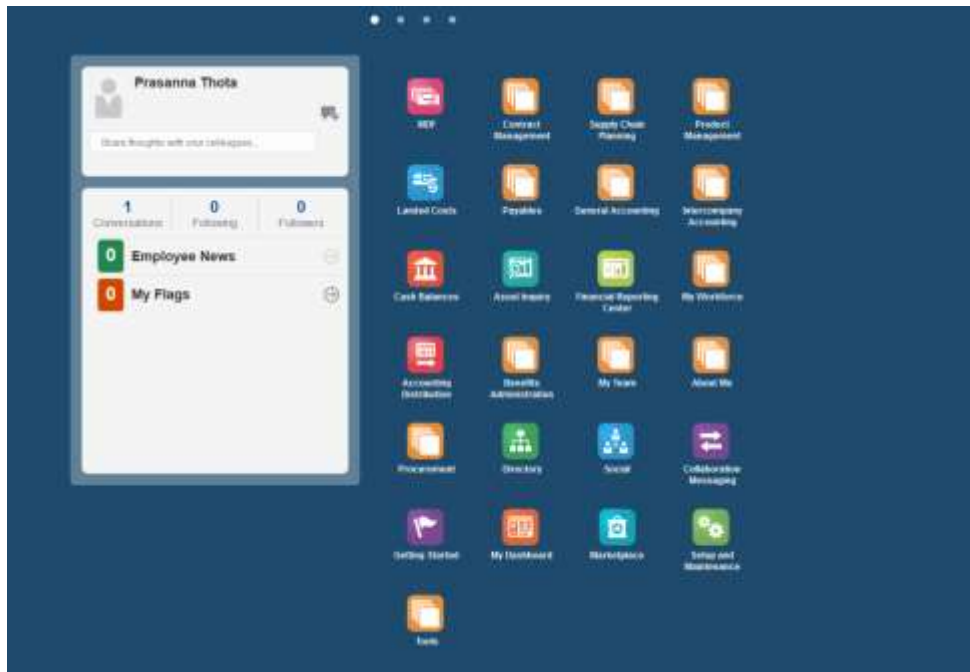
- Pre-built Data Warehouse and reporting content for Oracle EBS, PeopleSoft, Siebel, etc.
- Star-Schema Data Warehouse Adaptors for Oracle E-Business, PeopleSoft, Siebel, SAP etc.
 - Pre-built source extracts into the Data Warehouse via Oracle Data Integrator as the ETL tool
- Metadata Repository (semantic layer) – business logic for End-User reporting
- Includes pre-built catalog of Reports, Dashboards, KPIs etc.
- OBIA is available to license by module
 - Financial Analytics
 - Procurement & Spend Analytics
 - Order Management & Supply Chain Analytics
 - HR Analytics etc

Oracle Business Intelligence Applications

- No OBIA alternative available in OAC for new Customers to consider
- OBIA Environment
 - Lift and Shift to OAC
 - ETL Changes and customizations must happen within OBIA
 - Controlled process and change management required to keep OAC and OBIA changes in sync
 - Compliments on-premise OBIEE and OBIA deployments – Co-existence solution

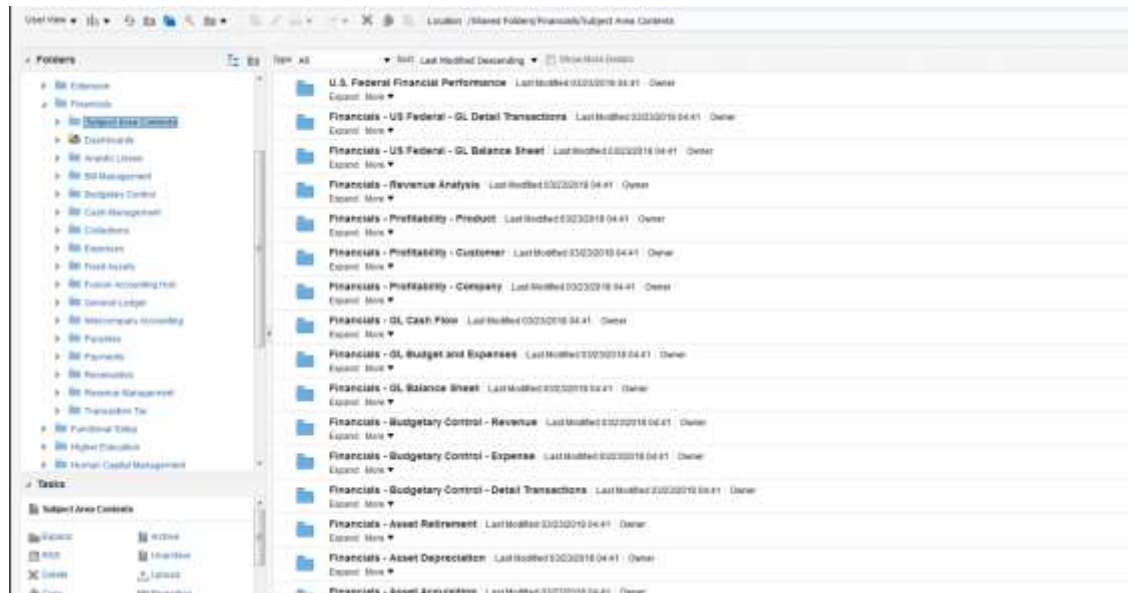
Oracle Fusion Transactional Business Intelligence (OTBI)

- Available and provided within Cloud Applications
 - Based on OBIEE/BICS technology
- Set of pre-built reports and dashboards for Cloud applications



Oracle Fusion Transactional Business Intelligence (OTBI)

- Customizations possible, but no RPD access
 - Integrated BI Publisher model for custom reports development



Oracle Fusion Transactional Business Intelligence (OTBI)

- OAC Compliments OTBI for self-service BI
 - Connects to Oracle Cloud Applications
 - Connects to other data sources, facilitates Users to perform data mashups and other analytics
 - End-User focused

Summary and Conclusion

■ OAC compliments OBIEE/OBIA

- OAC is a good alternate to OBIEE on-premise for net new Customers
 - OAC models available from third-party for EBS Customers
- Lift and Shift model for existing OBIEE on-premise, and for OBIA

■ OAC compliments OTBI as well, most likely needed with OTBI for self-service BI

■ In summary, for most enterprise implementations, migrating to the cloud means creating a hybrid cloud/on premise solution

■ Important to evaluate solution fit based on current investments, future state, cloud transformation vision, and other factors

Thank you!!!

naren.thota@Infosemantics.com